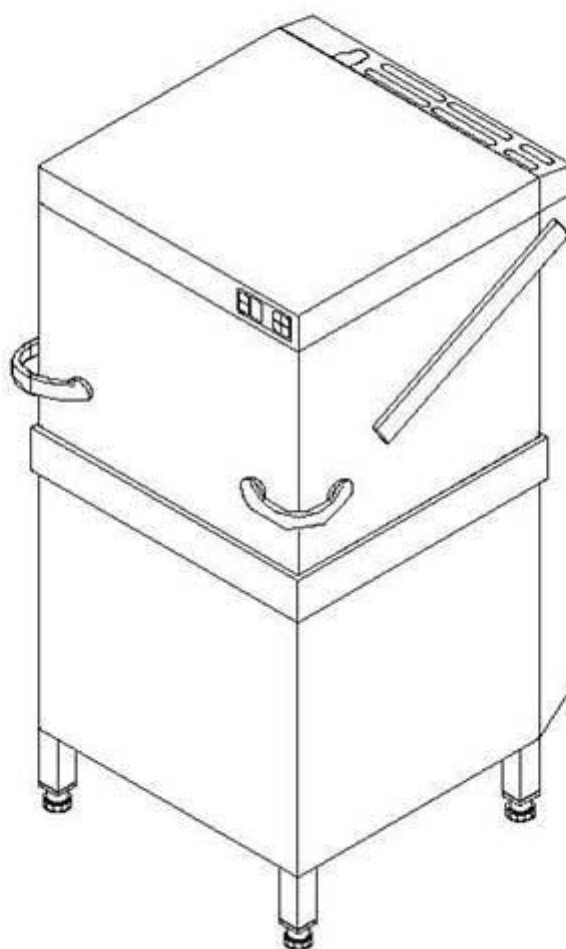


winterhalter

Spare parts list
GS 502, GS 515



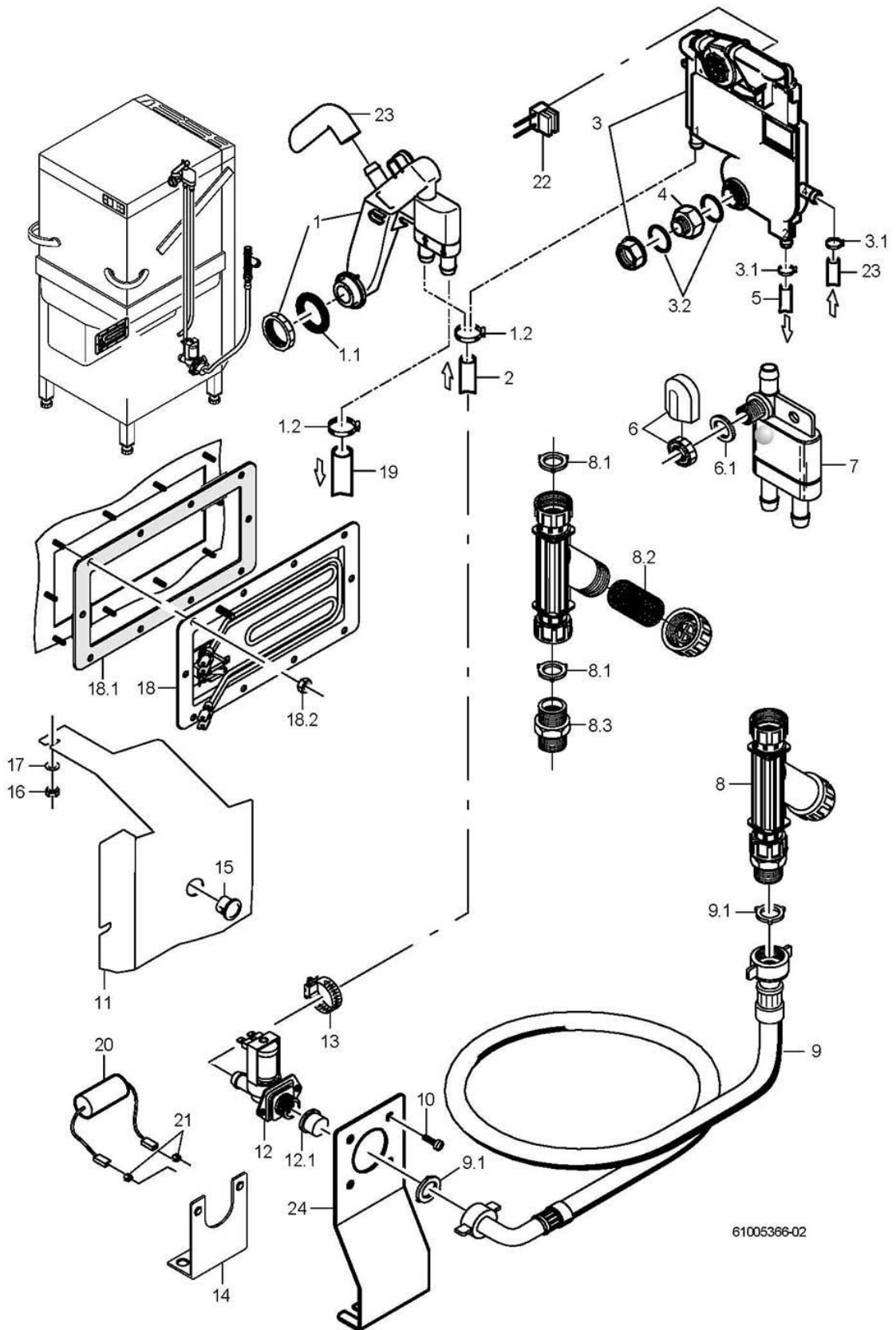
Drawn up: 02.11.99

Processed: 02.08.09

Parts no.: 89005928

Contents

Water inlet and tank heating - GS 502, GS 515	Page 1 - 4
Water softener - GS 502, GS 515	Page 5 - 6
Water inlet (Tundish GB) - GS 502, GS 515 to machine no.: 470 791	Page 7 - 8
Water drain, Mediamat Cyclo - GS 502, GS 515	Page 9 - 10
Wash pump - GS 502, GS 515	Page 11 - 12
Wash system, bottom - GS 502, GS 515	Page 13 - 14
Wash system, top - GS 502, GS 515 to machine no.: 470 791	Page 15 - 16
Rinse system - GS 502, GS 515 to machine no.: 470 791	Page 17 - 18
Washing/rinsing system - GS 502, GS 515 From machine no.: 470 792	Page 19 - 22
Reversing - GS 515	Page 23 - 24
Pressure boiler - GS 502, GS 515	Page 25 - 26
Pressure-independent boiler - GS 502, GS 515	Page 27 - 28
Rinse pump - GS 502, GS 515	Page 29 - 30
Dosage - GS 502, GS 515	Page 31 - 32
Chassis, container and panelling - GS 502	Page 33 - 34
Chassis, container and panelling - GS 515	Page 35 - 36
Hood - GS 502	Page 37 - 38
Hood - GS 502 Energy / Energy+	Page 39 - 40
Hood - GS 515	Page 41 - 42
Hood - GS 515 Energy / Energy+	Page 43 - 44
Electric parts - GS 502, GS 515	Page 45 - 46
Vapour extraction - GS 502, GS 515 Energy / Energy+	Page 51 - 52
Vapour extraction (covering) - GS 502, GS 515 Energy / Energy+	Page 49 - 50
Automatic hood opening (option) - GS 515	Page 53 - 54
Waste water heat recovery - GS 502, GS 515 Energy+	Page 55 - 56

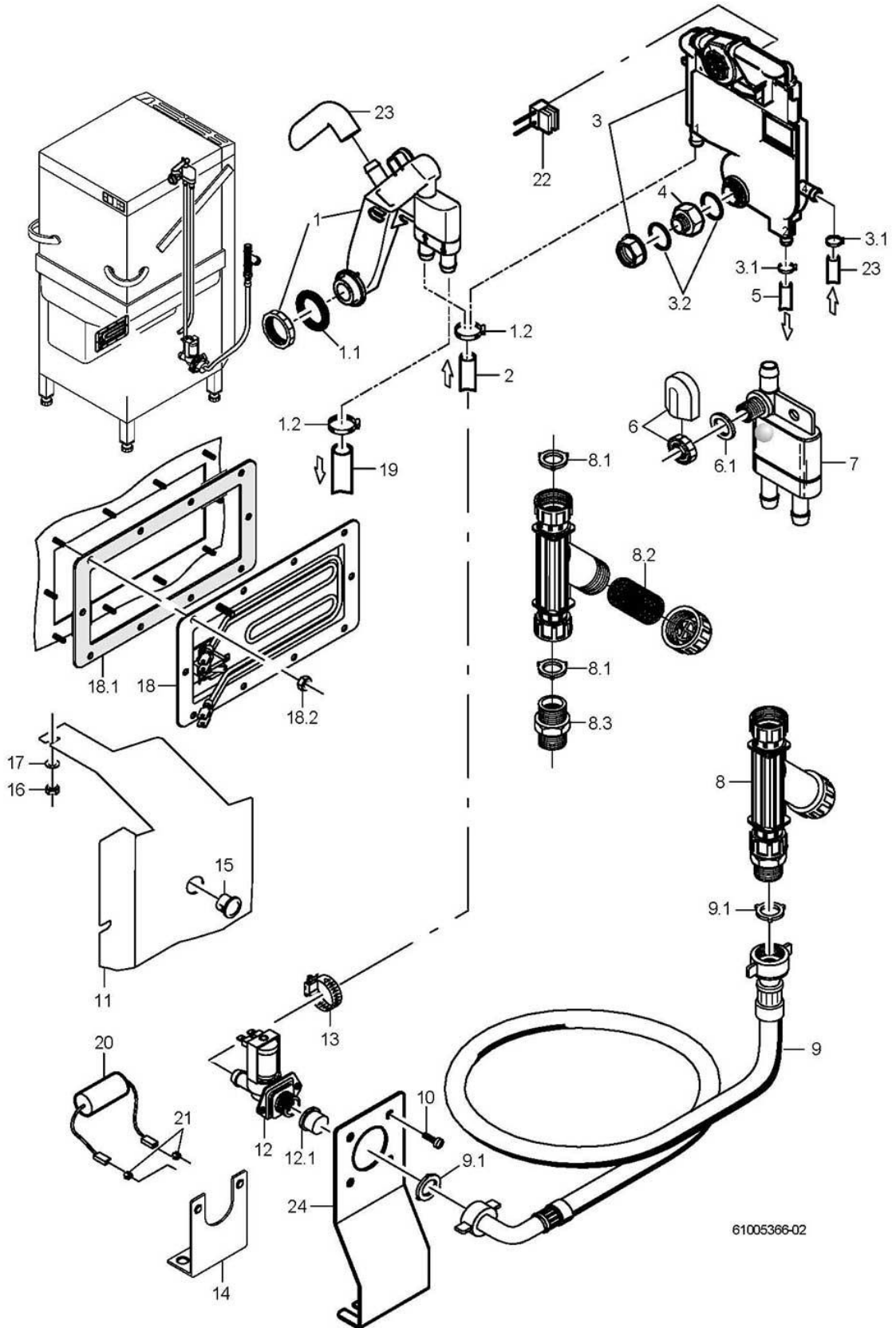


61005366-02

GS 502, GS 515**Water inlet and tank heating - GS 502, GS 515**

Item.	Designation	Parts no.:	Pc.	Notes
1	Reverse flow inhibitor kit	60003846		From machine no.: 470 792 Also order: pos. 2+19
1	Reverse flow inhibitor kit	60003846		From machine no.: 544 755; For machines without integrated water softener, not for UK and Australia
1	Separate check valve set	61006616		to machine no.: 544 754; Replacement for WSE set (pos. 3), not for UK and Australia
1.1	O-ring; 24 X 3,0	27 07 087		
1.2	Hose clamp; D12-22 X 9	28 02 105	2	
2	Industrial hose; DN13 X 3,5	40 02 035		1430 mm; "By-the-metre" goods
3	Set of WSE without impeller counter	60003511		From machine no.: 470 792; For machines without integrated water softener in the UK and Australia only
3	WSE with impeller counter kit	60003512		From machine no.: 470 792 for machines with built-in water softener
3.1	Hose clamp; D12-22 X 9	28 02 105	4	
3.2	O-ring; 24 X 3,0	27 07 087	2	
4	Extension; D20 X 21; SW36	61005911		From machine no.: 470 792
5	Shaped hose; DN10 X DN13 X 3,5	61006059		From machine no.: 470 792
5	Moulded hose; DN10 X DN12,5 X 3,5	80003726		GS502+GS 515 Energy+
6	Tank inlet set	61004545		to machine no.: 470 791
6.1	Gasket; D17 X D24 X 2,0	62001366		to machine no.: 470 791
7	Lateral check valve	35 01 194		to machine no.: 470 791
8	Dirt trap; 150 µM	80002153		incl. item 7.1 – 7.3
8.1	Gasket; D16 X D24 X 3,0	80002241	2	
8.2	Strainer; D27 X 67 X 150µM	80002728		
8.3	Double nipple; G 3/4" X 40; SW30	80002167		
9	Water supply hose; DN13 X 3,5; 2500	40 02 060		incl. item 8.1
9.1	Gasket; D16 X D24 X 3,0	80002241	2	
10	Countersunk screw; M4 X 8	20 10 309	2	
11	Bracket cpl.; 296,71 LG	61004993		up to mach. no. 430 732
12	Solenoid valve flow restrictor 15l; 220-240V/50-60HZ	31 06 180		Pressure boiler
12	Solenoid valve flow restrictor 5l; 220-240V/50-60HZ	31 06 174		Pressure-independent boiler
12	5 l solenoid valve set; 200-240V/50-60HZ/+ -10%	60004147		Japan; Australia
12	Solenoid valve flow restrictor 8l; 180-220V/50-60HZ	31 06 197		Japan
12.1	Solenoid valve filter	31 06 186		
13	Hose clamp; D12-22 X 9	28 02 105		
14	Bracket; 1,5 X 55 X 86,5	61005765		to machine no.: 545 310
15	Snap-in passage; D23,8	31 10 144		up to mach. no. 430 732

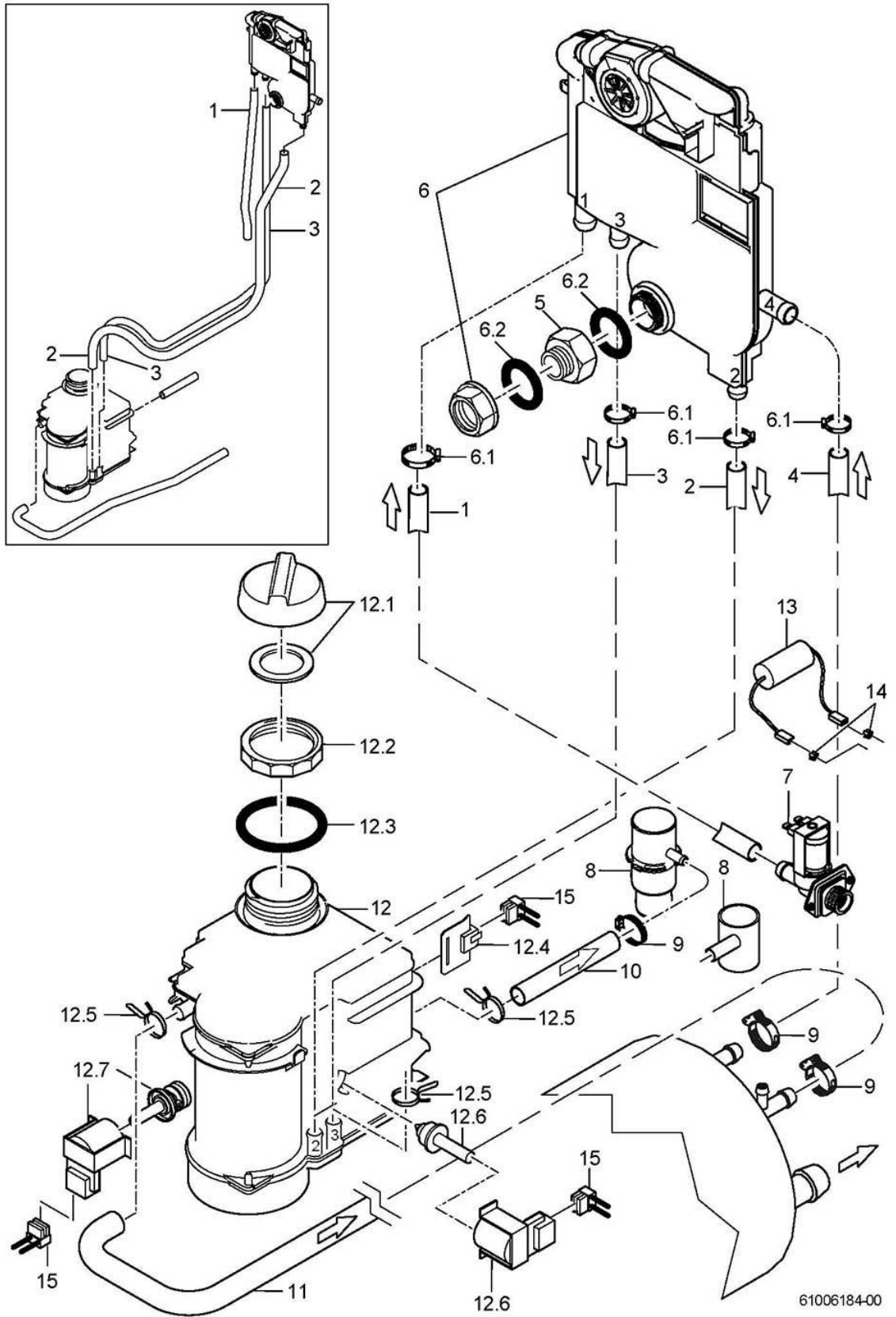
For missing items, see next page



61005366-02

GS 502, GS 515**Water inlet and tank heating - GS 502, GS 515**

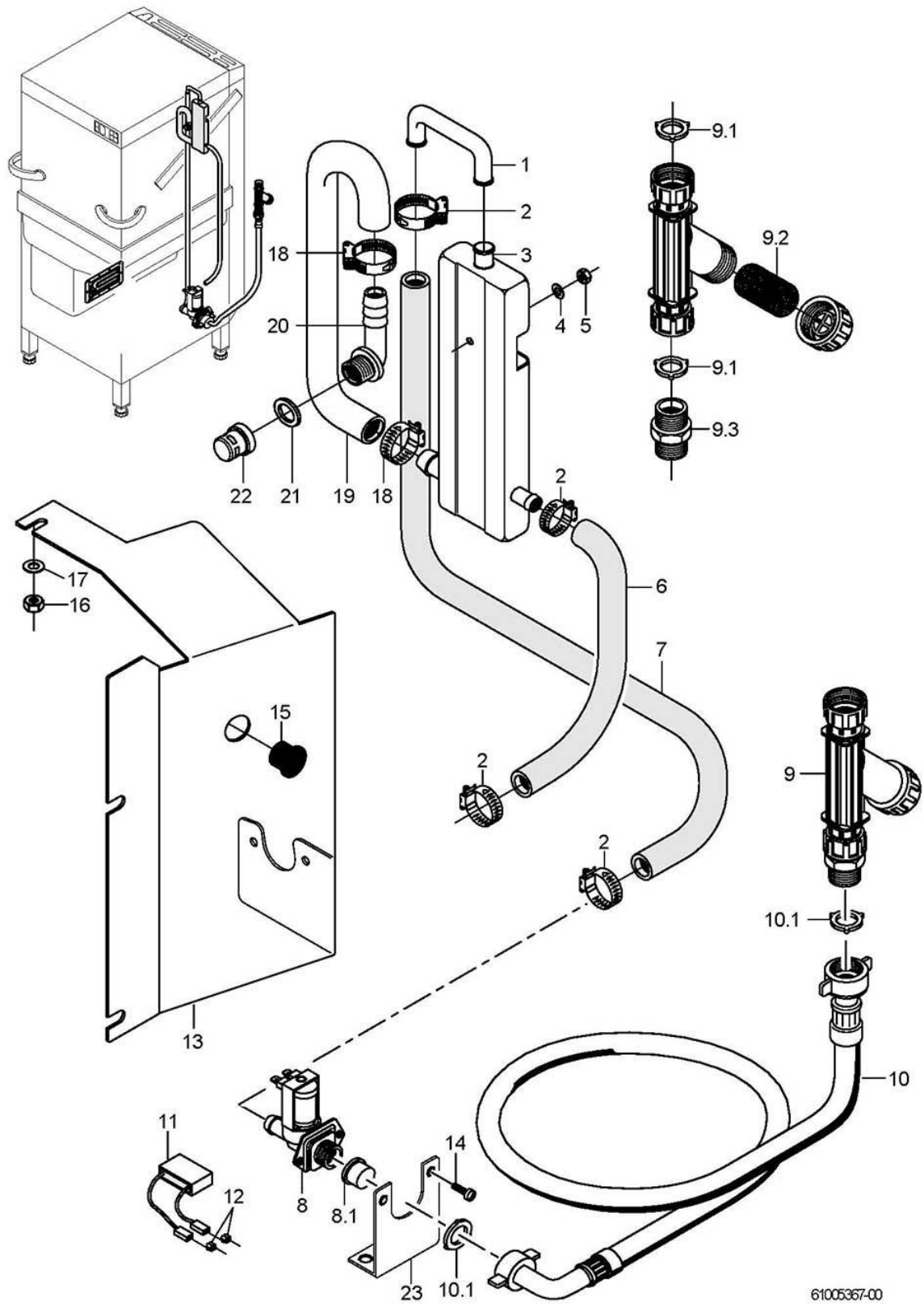
Item.	Designation	Parts no.:	Pc.	Notes
16	Hexagonal nut; M5 SELBSTSICHERND	21 05 302	3	
17	Washer; D5,3 X D15 X 1,2	22 05 301	3	
18	Heating element cpl.; 230V/1	61005231		incl. item 18.1 - 18.3
18	Heating element cpl.; 240V/1	61005230		incl. item 18.1 - 18.3
18	Heating element cpl.; 200V/1	61005229		incl. item 18.1 - 18.3
18.1	Gasket; 1,8 X 94 X 239	82000014		
18.2	Hexagonal nut; M5	21 01 203	10	
19	Industrial hose; DN13 X 3,5	40 02 035		1900 mm; "By-the-metre" goods
19	Hose elbow; DN12,5 X 4,0	40 03 051		GS502+GS 515 Energy+
20	RC element; 0,15 MICRO F; 3,3 KOHM	31 13 114		Pressure-independent boiler
21	Flat plug; 6,3 X 0,8	31 12 018	2	Pressure-independent boiler
22	Cable WMZ; 2 X 0,34QMM; 1500 LG	61005965		for machines with built-in water softener
23	Hose elbow 90°; DN12,5 X 4,0;30 X 1080	61005784		
24	Retainer; 1,5 X 55 X 151,77	61006410		From machine no.: 545 311



61006184-00

GS 502, GS 515**Water softener - GS 502, GS 515**

Item.	Designation	Parts no.:	Pc.	Notes
1	Industrial hose; DN13 X 3,5	40 02 035		1300 mm; "By-the-metre" goods
2	Hose; DN10 X 2,0	40 01 050		1010 mm; "By-the-metre" goods
3	Hose; DN10 X 2,0	40 01 050		1010 mm; "By-the-metre" goods
4	Hose elbow 90°; DN12,5 X 4,0;30 X 1080	61005784		adapt
5	Extension; D20 X 21; SW36	61005911		
6	WSE with impeller counter kit	60003512		
6.1	Hose clamp; D12-22 X 9	28 02 105	4	
6.2	O-ring; 24 X 3,0	27 07 087	2	
7	Solenoid valve flow restrictor 5l; 220-240V/50-60HZ	31 06 174		
7	Solenoid valve flow restrictor 8l; 180-220V/50-60HZ	31 06 197		Japan
8	T-piece	61005918		to machine no.: 488 150
8	Double nipple; D51 X 124; D40	61006227		From machine no.: 488 151
9	Hose clamp; D12-22 X 9	28 02 105		
10	Hose; DN10 X 2,0	40 01 050		480mm; "By-the-metre" goods
11	Shaped hose; DN10 X DN12,50 X 2,0	60003158		
12	Water softener kit; 220-240V; 50/60HZ	83000420		
12	Water softener kit; 200-210V; 50/60HZ	83000421		Japan
12.1	Cover, complete, with seal	83000407		
12.2	Lock nut; S54 X 4; D56	60003001		
12.3	O-ring; 54 X 5	27 07 065		
12.4	Dry reed contact lack of salt	83000408		
12.5	Wire hose clamp; D14,4 X 15,1	28 02 344	2	
12.6	Repair kit regeneration valve; 220-240V,50/60HZ	83000402		
12.6	Repair kit regeneration valve; 200-210V,50/60HZ	83000463		
12.7	Repair kit reversing valve; 220-240V,50/60HZ	83000460		
12.7	Repair kit reversing valve; 200-210V,50/60HZ	83000467		
13	RC element; 0,15 MICRO F; 3,3 KOHM	31 13 114		
14	Flat plug; 6,3 X 0,8	31 12 018	2	
15	Wiring loom; Water softener	61005966		
o.P.	Filling funnel	35 02 013		

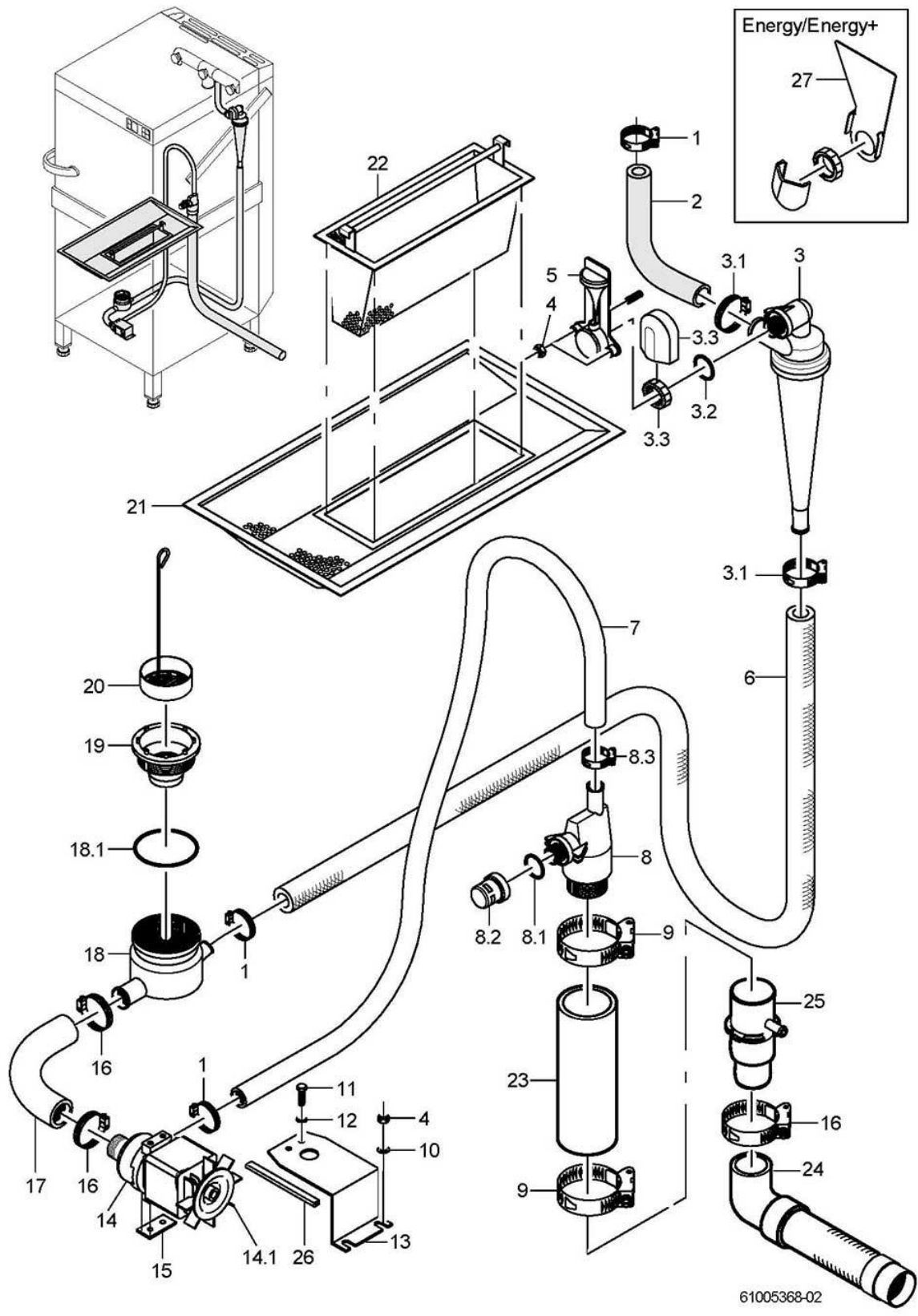


61005367-00

GS 502, GS 515

Water inlet (Tundish GB) - GS 502, GS 515 to machine no.: 470 791

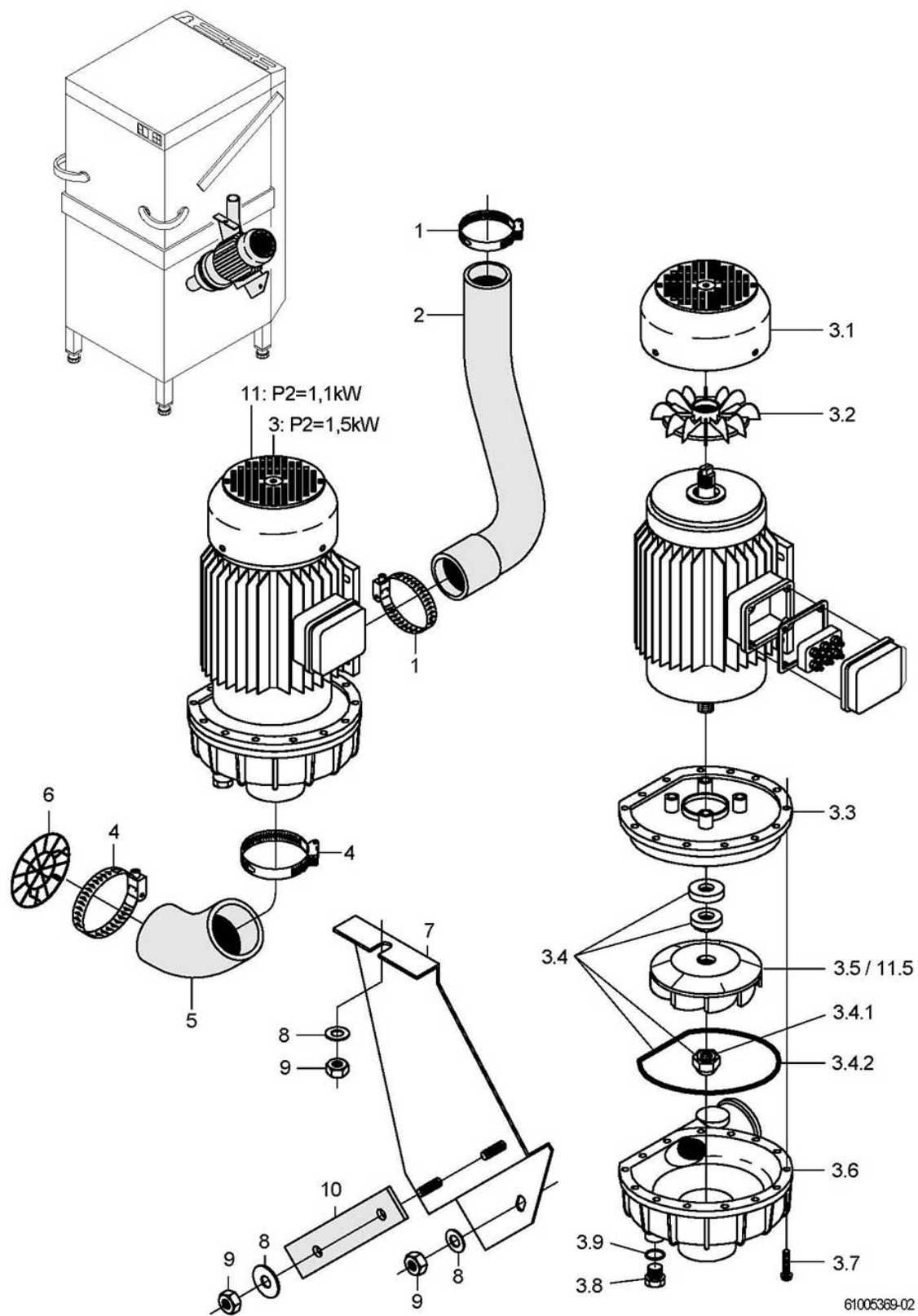
Item.	Designation	Parts no.:	Pc.	Notes
1	Pipe elbow; DN12 X DN14 X 2,0	60002507		
2	Hose clamp; D12-22 X 9	28 02 105		
3	Intermediate container; 39 X 131 X 293	60002542		to machine no.: 470 791
4	Washer; D5,3 X D10 X 1,0	22 01 300		
5	Hexagonal nut; M5 SELBSTSICHERND	21 05 302		
6	Hose bend; DN12,5 X 4,0	40 03 050		adapt
7	Industrial hose; DN13 X 3,5	40 02 035		1350 mm; "By-the-metre" goods
8	Solenoid valve flow restrictor 5l; 220-240V/50-60HZ	31 06 174		incl. item 8.1
8	5 l solenoid valve set; 200-240V/50-60HZ/+/-10%	60004147		Japan; Australia
8.1	Solenoid valve filter	31 06 186		
9	Dirty trap; 150 µM	80002153		incl. item 9.1 – 9.3
9.1	Gasket; D16 X D24 X 3,0	80002241	2	
9.2	Strainer; D27 X 67 X 150µM	80002728		
9.3	Double nipple; G 3/4" X 40; SW30	80002167		
10	Water supply hose; DN13 X 3,5; 2500	40 02 060		incl. item 10.1
10.1	Gasket; D16 X D24 X 3,0	80002241	2	
11	RC element; 0,15 MICRO F; 3,3 KOHM	31 13 114		
12	Flat plug; 6,3 X 0,8	31 12 018	2	
13	Bracket cpl.; 296,71 LG	61004993		up to mach. no. 430 732
14	Countersunk screw; M4 X 8	20 10 309	2	
15	Snap-in passage; D23,8	31 10 144		up to mach. no. 430 732
16	Hexagonal nut; M5 SELBSTSICHERND	21 05 302	3	
17	Washer; D5,3 X D15 X 1,2	22 05 301	3	
18	Hose clamp; D24-44 X 12	28 02 309	2	
19	Hose bend; DN25 X 4,0	61004322		
20	Wash distributor cpl.	62002887		
21	Gasket; D26 X D36 X 2,0	27 01 003		
22	Cap; G 3/4" X 24; SW32	61004974		
23	Bracket; 1,5 X 55 X 86,5	61005765		



61005368-02

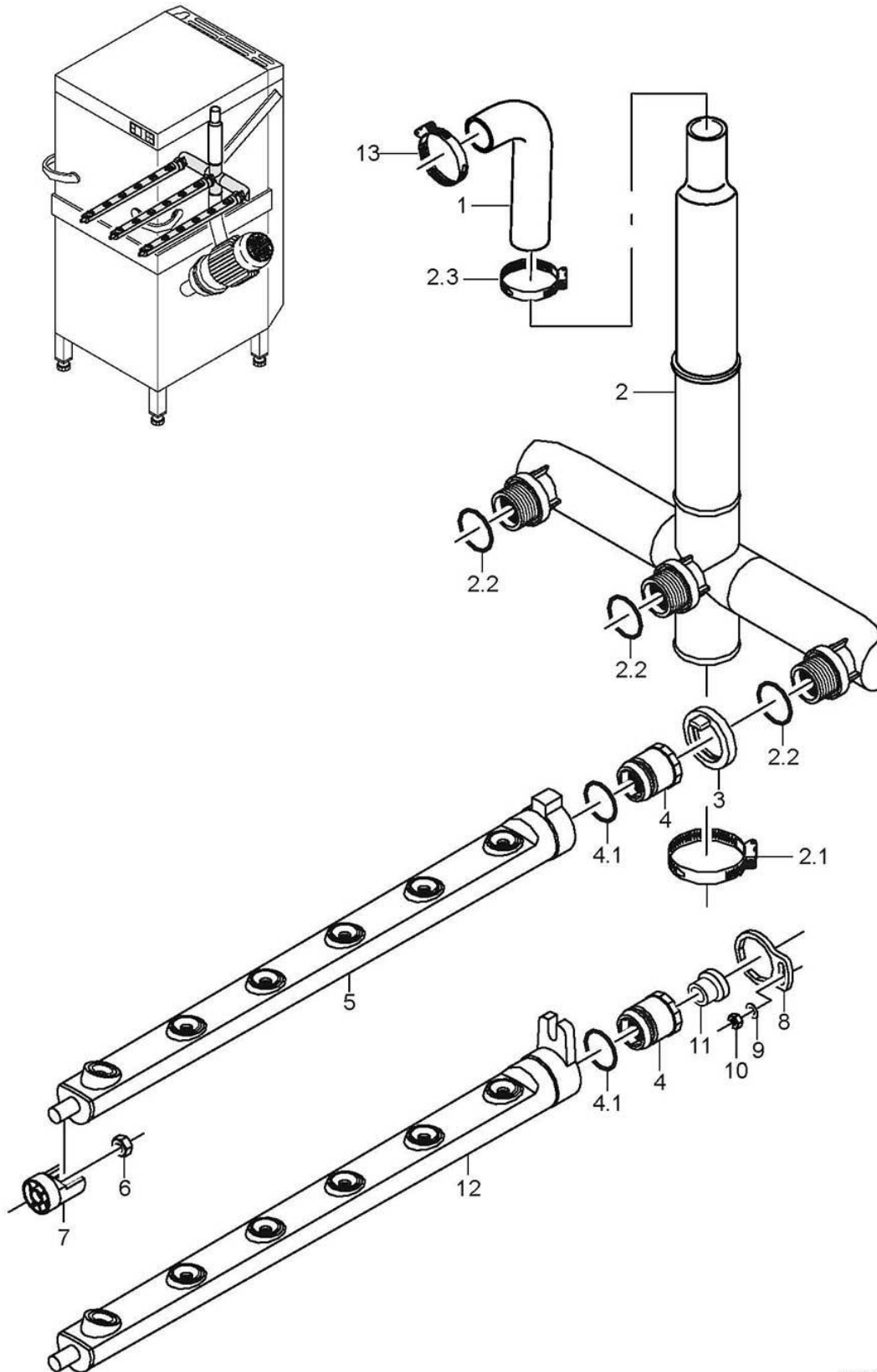
GS 502, GS 515**Water drain, Mediamat Cyclo - GS 502, GS 515**

Item.	Designation	Parts no.:	Pc.	Notes
1	Hose clamp; D20-30 X 12	28 02 109		
2	Hose elbow 90°; DN16 X 4,0; 70 X 145,5	61005272		to machine no.: 470 791
2	Hose elbow; DN16 X 4,0; 154 X 164	61005977		From machine no.: 470 792
3	Mediamat Cyclo	61005184		incl. item 3.1 - 3.3
3.1	Hose clamp; D12-22 X 9	28 02 105	2	
3.2	O-ring; 20 X 3,5	27 07 040		
3.3	Tank inlet set; G 1/2" X 8; SW27	61005339		
4	Hexagonal nut; M5 SELBSTSICHERND	21 05 302		
5	Ceiling wash jet	61005278		to machine no.: 470 791
6	Industrial hose; DN16 X 4,0	40 01 015		1035 mm; "By-the-metre" goods
7	Hose elbow; DN24X4,0;55X890	61005049		
8	Outlet	61005185		incl. item 8.1 – 8.3; 9.1
8.1	O-ring; 29,5 X 4,5	27 07 008		
8.2	Cap; G 3/4" X 24; SW32	61004974		
8.3	Hose clamp; D24-36 X 12	28 02 111		
9	Hose clamp; D47-67 X 12	28 02 115		
10	Washer; D5,3 X D15 X 1,2	22 05 301		
11	Hexagon screw; M6 X 10; A70	20 01 332	2	
12	Spring washer; B6	23 03 300	2	
13	Holder; 1,5 X 110,84 X 253,66	61005154		
14	3/0 lye pump; 200-240V/50-60HZ	31 02 410		incl. item 14.1
14.1	Fan blade	31 02 431		
15	Spacer; 3,0 X 16 X 46	61006026		
16	Hose clamp; D32-52 X 12	28 02 110	2	
17	Hose bend; DN24 X 4,0	61005028		
18	Sump pot	61005186		incl. item 18.1
18.1	O-ring; 91 X 3,5	27 07 075		
19	Sump drain set	61006178		
20	Sump filter; D70	65005555		
21	Flat filter; 30 X 291 X 546	61004703		
22	Filter cartridge cpl.	61006262		
23	Moulded hose; DN49 X 4,0	61005530		
24	Replacement set drain hose	55 28 287		to machine no.: 488 150
24	Drain hose; D40; 1500 LG	61006446		From machine no.: 488 151
25	Double nipple; D51 X 124; D40	61006227		From machine no.: 488 151
26	Edge protection profile; U9,5 X 2,0	40 04 015		140 mm; "By-the-metre" goods
27	Anti-rotation element; 0,8 X 69,9 X 102,8	80003568		GS 502 Energy/Energy+
27	Anti-rotation element; 0,8 X 71,5 X 144	80003595		GS 515 Energy/Energy+



GS 502, GS 515**Wash pump - GS 502, GS 515**

Item.	Designation	Parts no.:	Pc.	Notes
1	Hose clamp; D47-67 X 12	28 02 115	2	
2	Reduction elbow; DN50 X DN53	61004904		
3	Pump 1.5kW 9/1; 230V/400V/3/50HZ	31 02 470		from 431 181; up to 474 178
3	Pump 1.5kW 9/1; 230V/400V/3/60HZ	31 02 471		from 431 181; up to 474 178
3	Pump 1.5kW 9/1; 200V/346V/3/50HZ	31 02 472		from 431 181; up to 474 178
3	Pump 1.5kW 9/1; 200V/346V/3/60HZ	31 02 473		from 431 181; up to 474 178
3	Pump 1.5kW 9/1; 230V/1/50HZ	31 02 478		from 431 181; up to 474 178
3.1	Fan hood; 1,1 / 1,5 KW	31 02 212		
3.2	Fan blade; 1,1 / 1,5 KW	31 02 211		
3.3	Pump cover	31 02 208		
3.4	Gasket set; 1,1/1,7/1,85/0,73 KW	80002670		incl. item 3.4.1, 3.4.2
3.4.1	Cap nut; M8 SELBSTSICHERND	21 10 305		
3.4.2	O-ring; 158,35 X 3,53	31 02 209		
3.5	Pump impeller; D118	31 02 206		for 50 Hz pumps
3.5	Pump impeller; D100; 1,5KW; 60HZ	31 02 436		for 60 Hz pumps
3.6	Pump housing	31 02 204		
3.7	Hexagon screw; M4 X 25; 8,8	20 01 020		
3.8	Dummy plug; G 1/2" X 20,5	35 01 108		
3.9	O-ring; 20 X 3,5	27 07 040		
4	Hose clamp; D62-82 X 12	28 02 137	2	
5	Hose elbow; DN62	61004903		
6	Inline filter; D72	62001956		
7	Bracket cpl.	61005031		GS 502
7	Bracket cpl.	61005480		GS 515
8	Washer; D6,4 X D18 X 1,6	22 05 302	4	
9	Hexagonal nut; M6 SELBSTSICHERND	21 05 304	4	
10	Support; 3,0 X 32 X 130	61005004		
11	Pump 1.1 kW 9/1; 254V/440V/3/60HZ; IP55	31 02 416		From machine no.: 474 179; incl. item 3.1-3.4.2; 11.5; 3.6-3.9
11	Pump 1.1 kW 2/1; 230V/400V/3/50HZ; IP44	31 02 263		From machine no.: 474 179; incl. item 3.1-3.4.2; 11.5; 3.6-3.9
11	Pump 1,1 kW 2/1; 230V/1/50HZ; IP44	31 02 265		From machine no.: 474 179; incl. item 3.1-3.4.2; 11.5; 3.6-3.9
11	Pump 1.1 kW 2/1; 230V/400V/3/60HZ; IP44	31 02 267		From machine no.: 474 179; incl. item 3.1-3.4.2; 11.5; 3.6-3.9
11	Pump 1.1 kW 2/1; 200V/3/50HZ; IP44	31 02 302		From machine no.: 474 179; incl. item 3.1-3.4.2; 11.5; 3.6-3.9
11	Pump 1.1 kW 2/1; 200V/3/60HZ	31 02 303		From machine no.: 474 179; incl. item 3.1-3.4.2; 11.5; 3.6-3.9
11.5	Pump impeller; D111	31 02 273		for 50 Hz pumps
11.5	Pump impeller; D96	31 02 274		for 60 Hz pumps



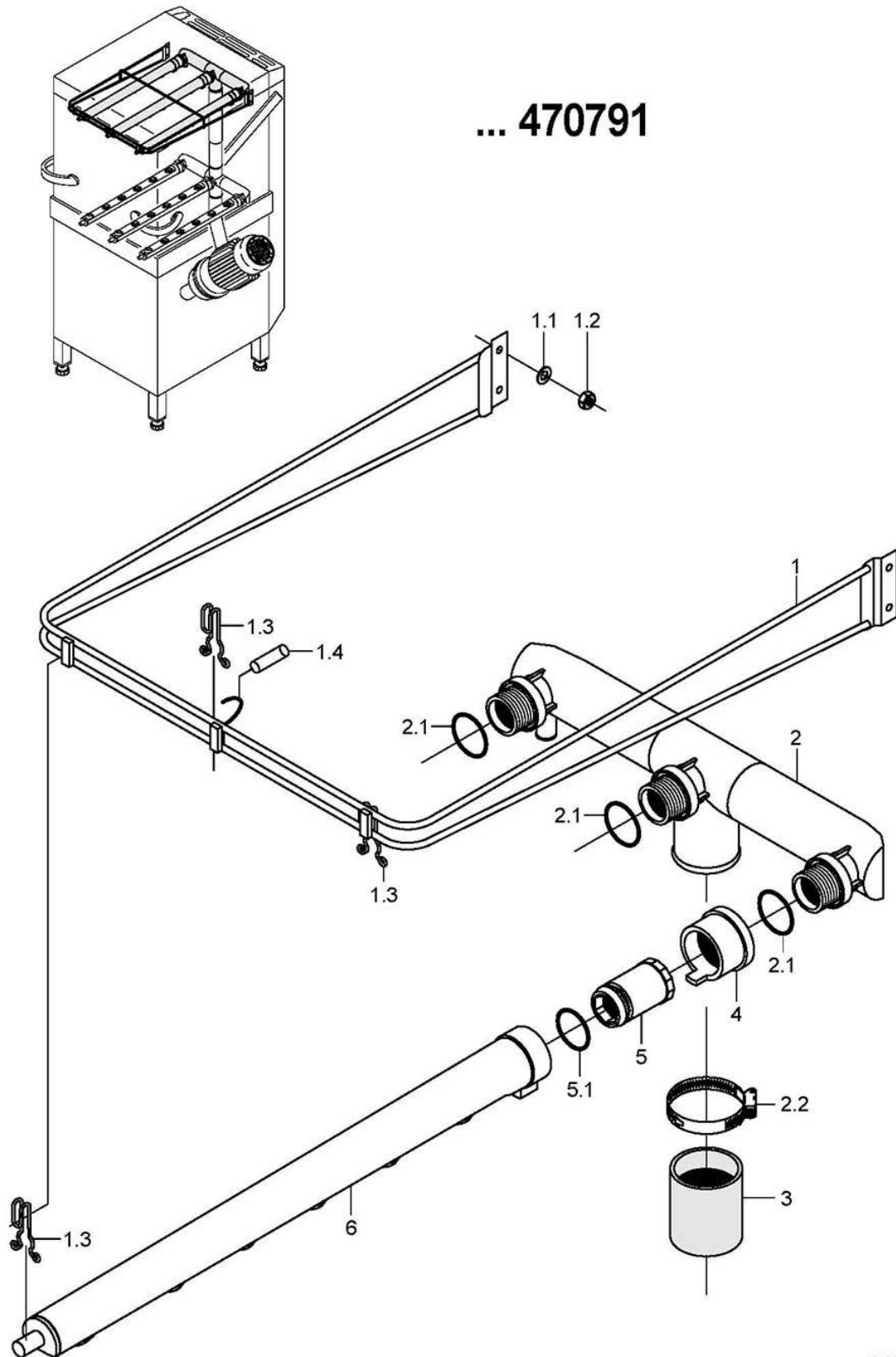
61005370-02

GS 502, GS 515

Wash system, bottom - GS 502, GS 515

Item.	Designation	Parts no.:	Pc.	Notes
1	Hose elbow; DN36 X 6,0; 74 X 214	61005994		adapt
2	Bottom wash distributor cpl.	61005187		to machine no.: 470 791 adapt
2.1	Hose clamp; D47-67 X 12	28 02 115	2	
2.2	O-ring; 29,5 X 4,5	27 07 008	3	
2.3	Hose clamp; D32-52 X 12	28 02 110		
3	Locking ring; D49 X 19,5	60002652	3	GS 502
4	Locking nut	60002785	3	incl. item 4.1
4.1	Seal ring; D26 X D32,5 X 5,0	70009122	3	
5	Wash arm cpl.; 6 DÜSEN; 580 LG	61005052	3	GS 502
6	Hexagonal nut; M5 SELBSTSICHERND	21 05 302	3	
7	Wash arm holder; D36 X 45,5	61004969	3	
8	Setting washer; 5,0 X 40 X 50	60002540	3	GS 515
9	Washer; D4,3 X D12 X 1,0	22 05 300		GS 515
10	Hexagonal nut; M4 SELBSTSICHERND	21 05 300		GS 515
11	Throttle; D12,5 X D22 X 10	61005671	3	GS 515
12	Wash arm cpl.; 6 DÜSEN; 580 LG	61005611		GS 515
13	Hose clamp; D32-52 X 12	28 02 110		

... 470791

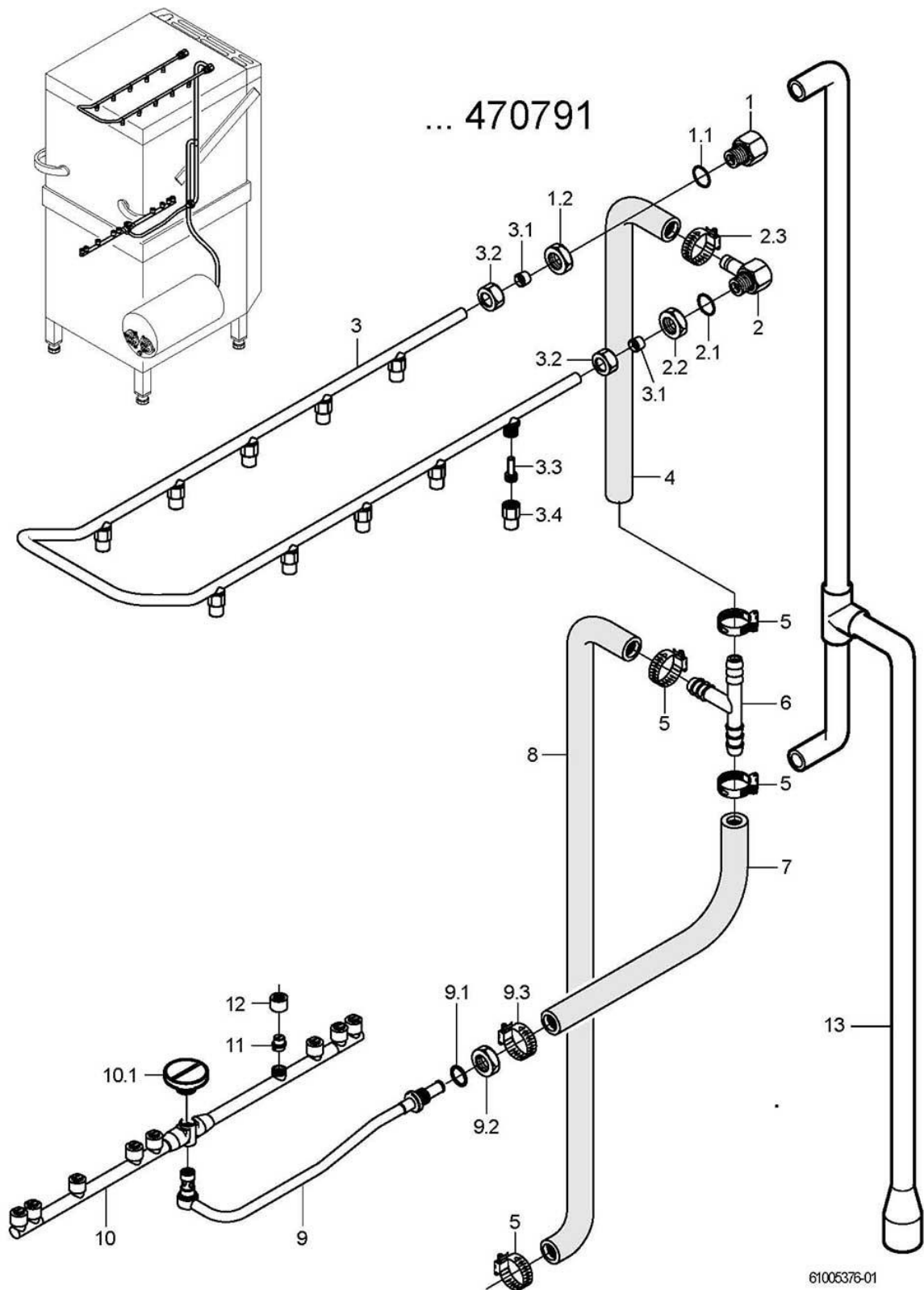


61005371-00

GS 502, GS 515

Wash system, top - GS 502, GS 515 to machine no.: 470 791

Item.	Designation	Parts no.:	Pc.	Notes
1	Top wash arm support cpl.	61005188		incl. item 1.1 - 1.3; GS 502
1	Top wash arm support cpl.	61005739		incl. item 1.1 - 1.3; GS 515
1.1	Washer; D6,4 X D18 X 1,6	22 05 302	4	
1.2	Hexagonal nut; M6 SELBSTSICHERND	21 05 304	4	
1.3	Spring; D3; 14 X 45 X 68,26	61004885	3	
1.4	Hose; DN5 X 1,5	40 01 024		70 mm; "By-the-metre" goods
2	Top wash distributor cpl.	61005189		incl. item 2.1 - 2.2
2.1	O-ring; 29,5 X 4,5	27 07 008	3	
2.2	Hose clamp; D47-67 X 12	28 02 115		
3	Industrial hose; DN50 X 6,0	40 02 006		80 mm; "By-the-metre" goods; GS 502
3	Industrial hose; DN50 X 6,0	40 02 006		110 mm; "By-the-metre" goods ; GS 515
4	Locking ring; D49 X 39,5	61004880	3	
5	Locking nut cpl.	61005191	3	incl. item 5.1
5.1	Seal ring; D26 X D32,5 X 5,0	70009122	3	
6	Wash arm cpl.; 6 DÜSEN; 580 LG	61005052	3	

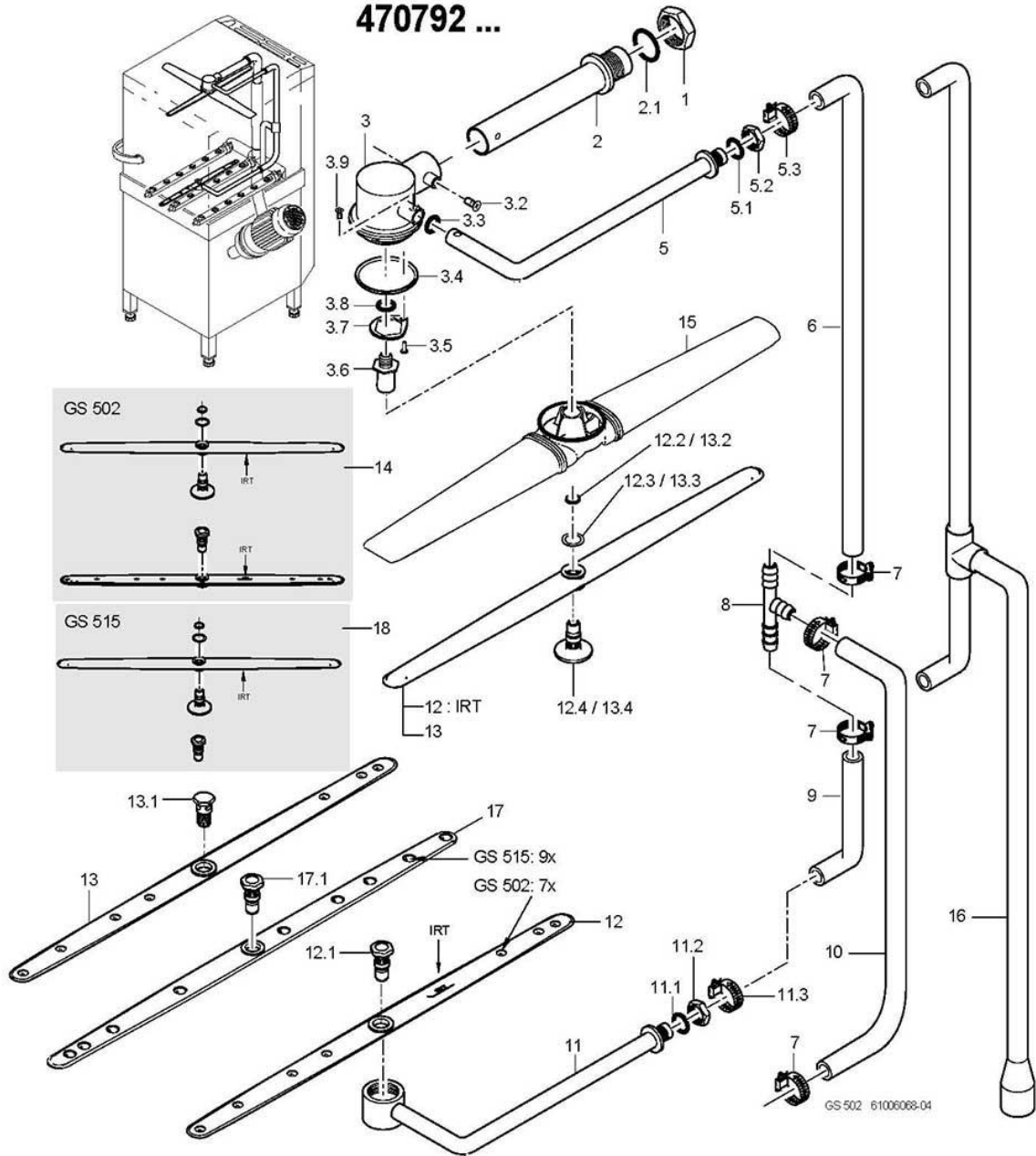


GS 502, GS 515

Rinse system - GS 502, GS 515 to machine no.: 470 791

Item.	Designation	Parts no.:	Pc.	Notes
1	Nipple cpl.	61005194		incl. item 1.1 - 1.2
1.1	O-ring; 20 X 3,5	27 07 040	1	
1.2	Hexagonal nut; G 1/2" X 6,0; SW32	61005721		
2	Nipple cpl.	61005195		incl. item 2.1 – 2.3
2.1	O-ring; 20 X 3,5	27 07 040	1	
2.2	Hexagonal nut; G 1/2" X 6,0; SW32	61005721		
2.3	Hose clamp; D12-22 X 9	28 02 105		
3	Ring pipeline cpl.	61005196		incl. item 3.1 – 3.4
3	Ring pipeline cpl.	61005197		incl. item 3.1 – 3.4 ; glass rinsing kit
3.1	Cutting ring; D12 X 10	29 07 304	2	
3.2	Union nut; G 1/2" X D12,2; SW24	29 07 301	2	
3.3	Spray jet swirl; D8 X 18,8	65002764	10	
3.4	Spray jet cap; D14,6 X 21	65002765	10	
4	Hose bend; DN12,5 X 4,0	40 03 050		adapt GS 502
4	Industrial hose; DN13 X 3,5	40 02 035		410mm; Metre item, GS 515
5	Hose clamp; D12-22 X 9	28 02 105		
5	Hose clamp; D24-44 X 12	28 02 309		Pressure-independent boiler
6	Hose T-connecting piece; D15 X D15 X D15	70010598		
7	Hose bend; DN12,5 X 4,0	40 03 050		adapt
8	Industrial hose; DN13 X 3,5	40 02 035		800 mm; "By-the-metre" goods
9	Revolving arm holder cpl.	61005198		incl. item 9.1 – 9.3
9.1	O-ring; 20 X 3,5	27 07 040		
9.2	Hexagonal nut; G 1/2" X 8,0; SW27	30 09 201		
9.3	Hose clamp; D12-22 X 9	28 02 105		
10	Revolving rinse arm kit; 7 DÜSEN	61006244		GS 502
10	Revolving rinse arm kit; 9 DÜSEN	65005499		GS 515
10.1	Screw cap; M10 X D7,8 X D24	61005681		
11	Fan jet, size 5; D11,2 X 10	62002820	9	
12	Union nut; M14 X D9,1; D17	62002812	9	
13	Rinse manifold	61006333		Pressure-independent boiler

470792 ...



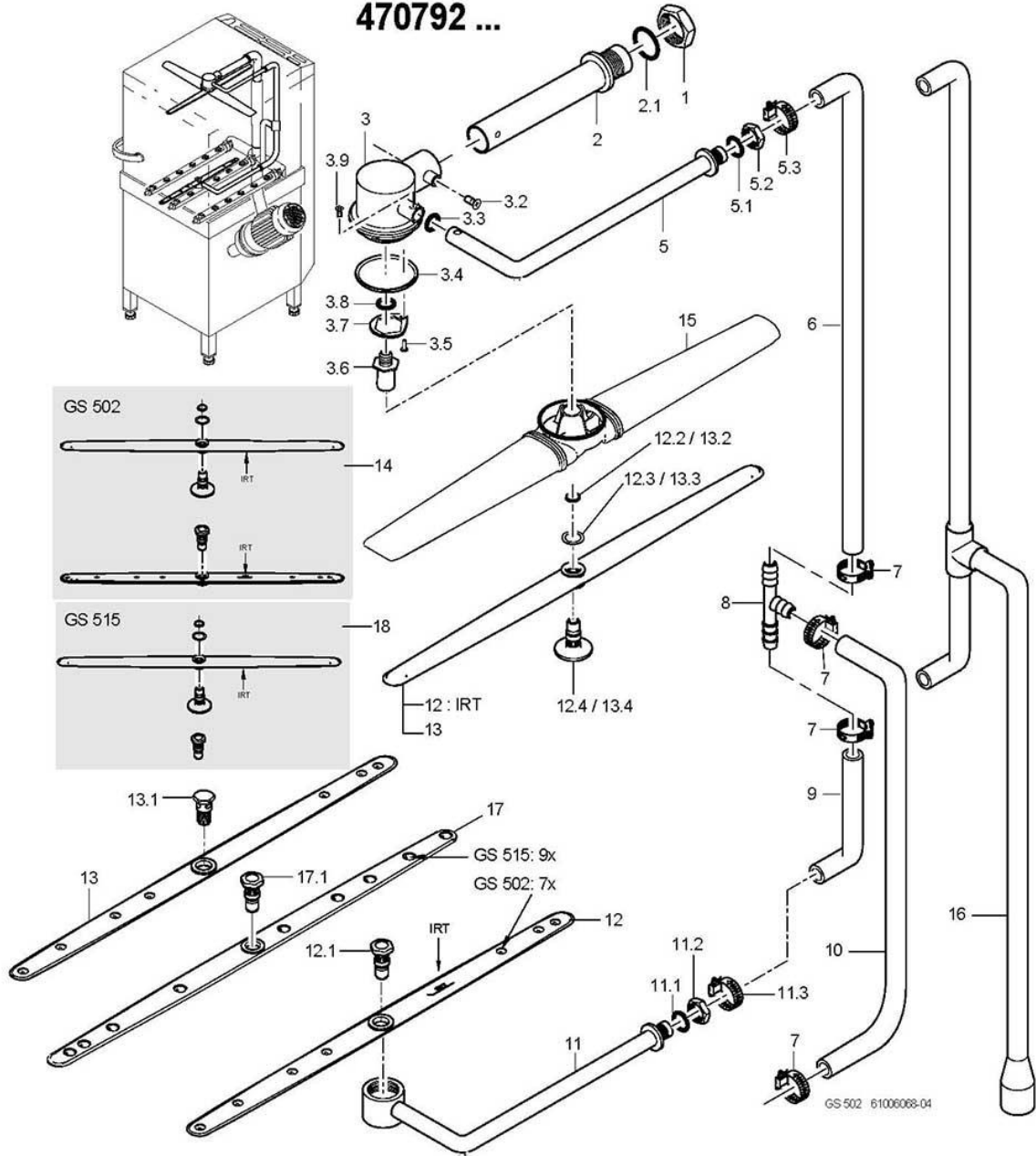
GS 502, GS 515

Washing/rinsing system - GS 502, GS 515 From machine no.: 470 792

Item.	Designation	Parts no.:	Pc.	Notes
1	Hexagon nut; G1 1/4" X 11,5; SW50	61005976		
2	Wash pipe assembly	61006064		
2.1	O-ring; 42 X 3	27 07 073		incl. item 2.1
3	Revolving arm kit	61006065		incl. item 3.1 - 3.9
3.2	PT screw; KA 50 X 13	20 17 306	2	
3.3	O-ring; 12 X 1,5	27 07 072		
3.4	Seal ring; D53,4 X D57,8 X 2,0	60003021		
3.5	Sheet metal screw; ST 3,5 X 9,5	20 20 305		
3.6	Revolving arm socket; D7,9 X 45,7; M12	61006241		
3.7	Washer; 1,5 X 28 X 32,3	61006076		
3.8	O-ring; 10 X 2,0	27 07 080		
3.9	Sheet metal screw; ST 2,9 X 6,5	20 20 308		
5	Rinse inlet set	61006066		incl. item 5.1 – 5.3
5.1	O-ring; 20 X 3,5	27 07 040		
5.2	Hexagonal nut; G 1/2" X 8,0; SW27	30 09 201		
5.3	Hose clamp; D14-22 X 12	28 02 138		
6	Hose bend; DN12,5 X 4,0	40 03 050		Pressure boiler
7	Hose clamp; D12-22 X 9	28 02 105		
8	Hose T-connecting piece; D15 X D15 X D15	70010598		
9	Hose bend; DN12,5 X 4,0	40 03 050		Pressure boiler
10	Industrial hose; DN13 X 3,5	40 02 035		800 mm; Metre item; pressure boiler
11	Revolving arm kit	61006067		incl. item 11.1 - 11.3
11.1	O-ring; 20 X 3,5	27 07 040		
11.2	Hexagonal nut; G 1/2" X 8,0; SW27	30 09 201		
11.3	Hose clamp; D14-22 X 12	28 02 138		
12	Rotating rinse arm, min. 2.4 l	61006612		From machine no.: 548 482; For machines with reduced rinse water volume
12.1	Rotary arm screw; M12 X 36; SW19	60004123		
12.2	Locking ring; D12 X 0,8	60003023		
12.3	Washer; D14,10 X D20 X 1,0	60003487		
12.4	Rotary arm screw; M12 X 34,9; D35	60004125		

For missing items, see next page

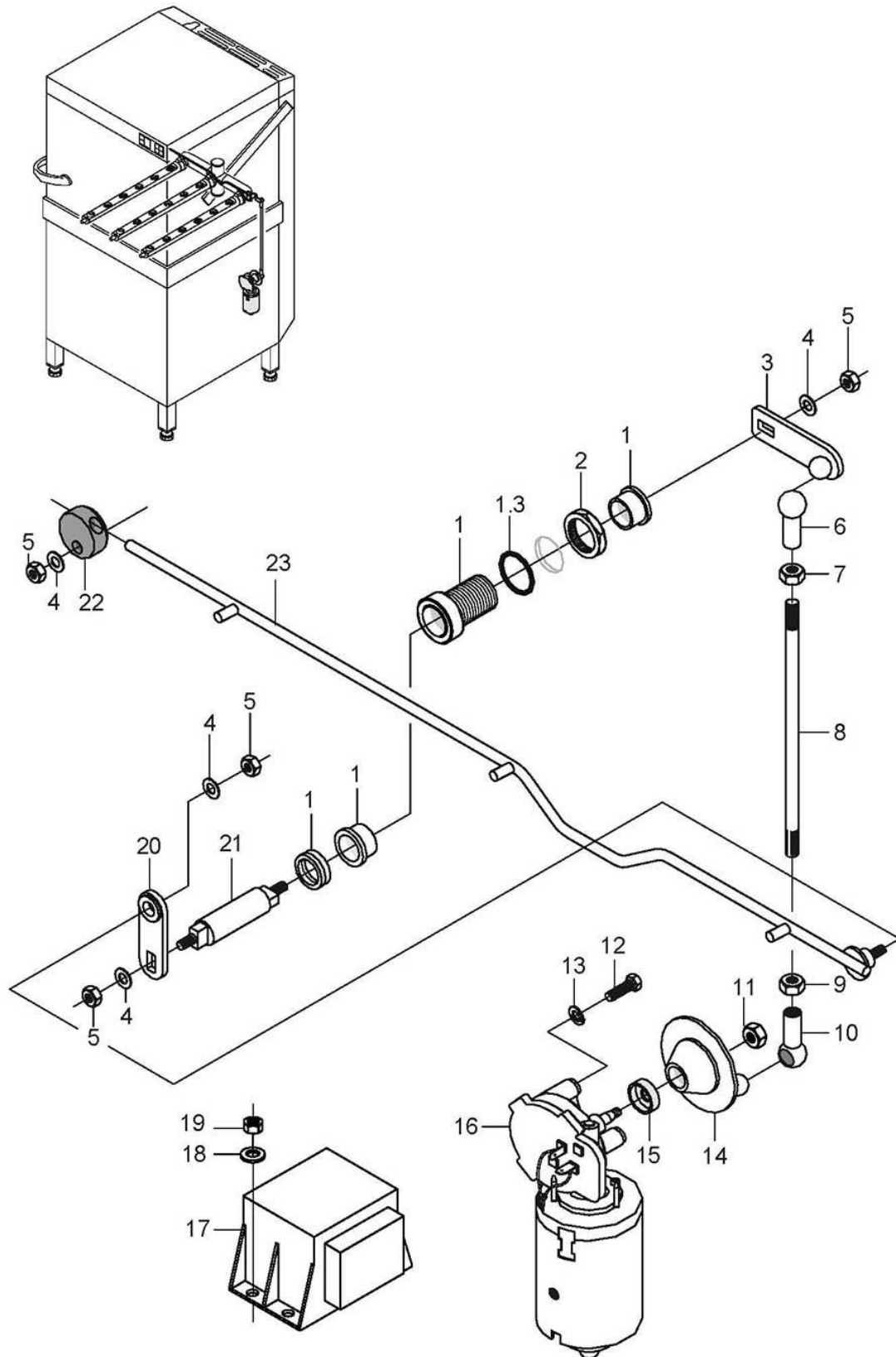
470792 ...



GS 502, GS 515

Washing/rinsing system - GS 502, GS 515 From machine no.: 470 792

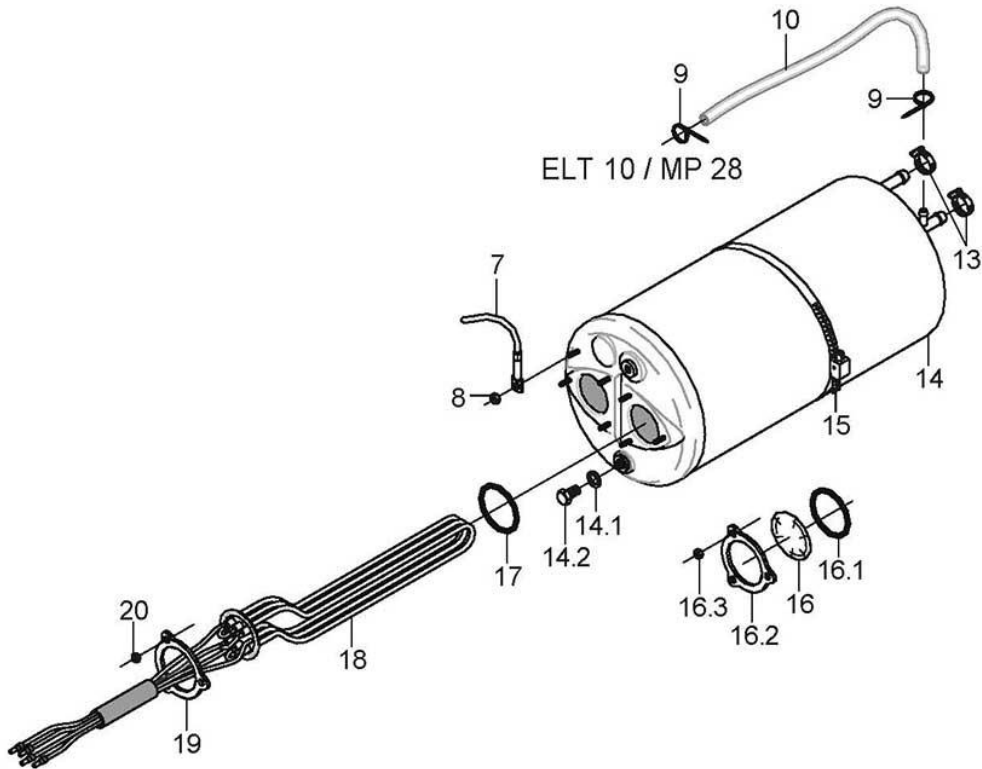
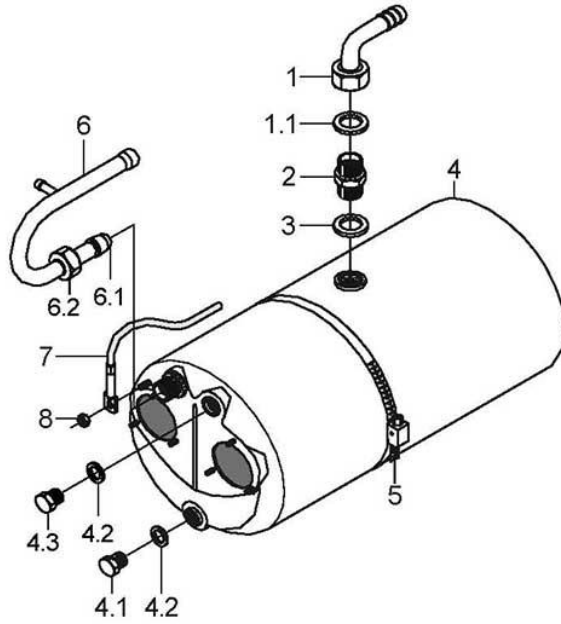
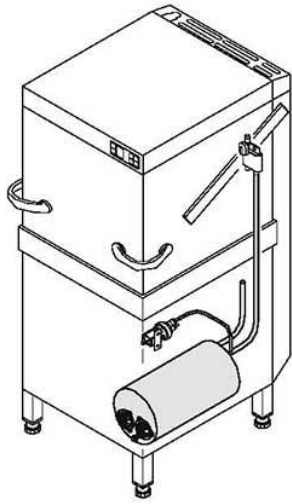
Item.	Designation	Parts no.:	Pc.	Notes
13	Rinsing wash arm set; 7 DÜSEN	60003515		to machine no.: 548 482
13.1	Revolving arm screw; M12 X 30; SW19	60003045		no longer deliverable; up to mach. no.: 496 938 replaced by 60003515
13.1	Rotary arm screw; M12 X 36; SW19	60004123		From machine no.: 496 939
13.2	Locking ring; D12 X 0,8	60003023		
13.3	Washer; D14,10 X D20 X 1,0	60003487		
13.4	Revolving arm screw; M12 X 32,3; D25	60003821		no longer deliverable; up to mach. no.: 496 938 replaced by 60003515
13.4	Rotary arm screw; M12 X 34,9; D35	60004125		From machine no.: 496 939
14	Rotating rinse arm conversion, min. 2.4 l; GS215; GS300; GS502	61006613		to machine no.: 548 482; For machines with non pressurised boilers
15	Set of rotary arms washing	60003520		
16	Rinse manifold	61006333		Pressure-independent boiler
17	Revolving rinse arm kit, 9 DÜSEN	65005462		GS 515
17.1	Rotary arm screw; M12 X 36; SW19	60004123		
18	Rotating rinse arm conversion, min. 2.4 l; GS515	61006619		to machine no.: 548 482; For machines with non pressurised boilers



61005716-00

GS 502, GS 515**Reversing - GS 515**

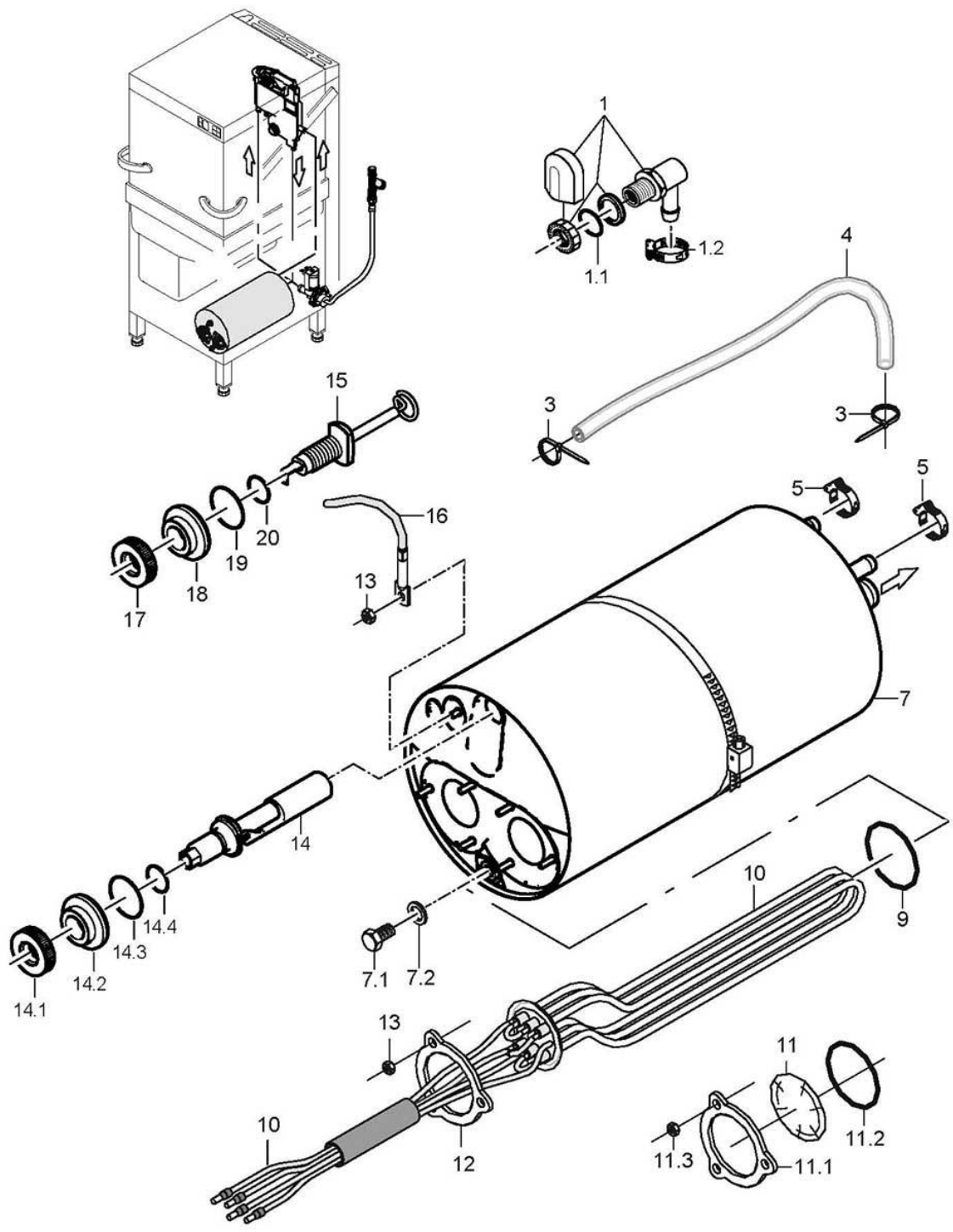
Item.	Designation	Parts no.:	Pc.	Notes
1	Bearing bush cpl.	65004835		incl. item 1.1
1.1	O-ring; 26 X 2,5	27 07 062		
2	Hex nut; G 3/4" X 5,0; SW32	61002626		
3	Lever	61005483		
4	Washer; D6,4 X D12,5 X 1,6	22 01 302		
5	Hexagonal nut; M6 SELBSTSICHERND	21 05 304		
6	Ball socket right; M8	28 05 500		
7	Hexagonal nut; M8	21 01 305		
8	Threaded rod; M8 X 265	61005486		
9	Hexagonal nut; M8 LH	21 01 001		
10	Ball socket left; M8-LH	28 05 501		
11	Hexagonal nut; M8 SELBSTSICHERND	21 05 306		
12	Hexagon screw; M6 X 16; A70	20 01 306		
13	Spring washer; B6	23 03 300		
14	Crank disk cpl.	60001297		
15	Radial shaft seal; D9,7 X D18 X 6	27 10 022		
16	Geared motor set	61006607		
17	Transformer; 230V/1/50HZ	31 15 020		
18	Washer; D4,3 X D12 X 1,0	22 05 300		
19	Hexagonal nut; M4 SELBSTSICHERND	21 05 300		
20	Reversing lever	61006181		
21	Reversing shaft; D12 X 66,6	60002385		
22	Bearing; D26 X 12	61005648		
23	Connecting rod cpl.	61005571		
o.P.	Reversal unit wire set; 0,75QMM	61005672		



61005373-01

GS 502, GS 515**Pressure boiler - GS 502, GS 515**

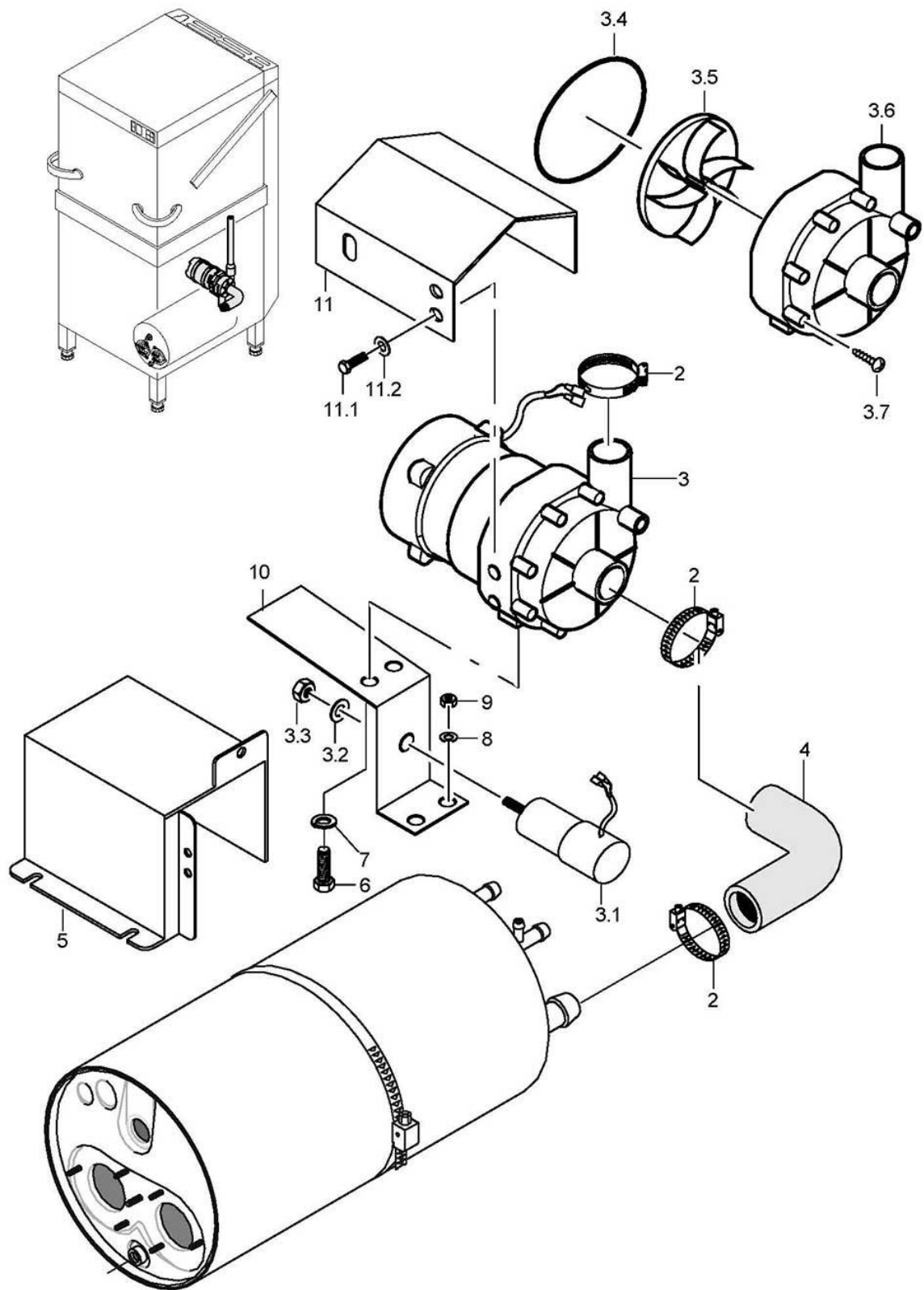
Item.	Designation	Parts no.:	Pc.	Notes
1	Hose nipple, angled; D18	60002474		incl. item 1.1 to machine no.: 431 163
1.1	Gasket; D16 X D24 X 3,0	80002241		
2	Reducing nipple; G 1/2" X G 3/4"; SW27	61003430		to machine no.: 431 163
3	Gasket; D21 X D28 X 2,0	27 09 011		to machine no.: 431 163
4	Boiler compl.	61005192		incl. item 4.1 - 4.3 For installation see item 14
4.1	Hexagon screw; M10 X 16; A70	20 01 352		to machine no.: 431 163
4.2	Gasket; D10 X D18 X 1,5	27 03 003		to machine no.: 431 163
4.3	Locking screw; M9 X 1 X 14	70003890		to machine no.: 431 163
5	Hose clamp; D50-215 X 12	28 02 126		
6	Boiler inlet elbow, cpl.	55 09 054		incl. item 6.1 - 6.2 to machine no.: 431 163
6.1	Cutting ring; D12 X 10	29 07 300		to machine no.: 431 163
6.2	Union nut; G 1/2" X D12,2; SW24	29 07 201		to machine no.: 431 163
7	Thermal sensor kit 1000mm	80003803		with heat-conducting foil
8	Ratchet nut; M5	21 01 310	3	
9	Cable tie; 100 X 2,5	31 20 175		
10	Hose; DN5 X 1,5	40 01 024		700 mm; "By-the-metre" goods
13	Hose clamp; D12-22 X 9	28 02 105		
14	Boiler compl.	61005192		incl. item 14.1 – 14.2
14.1	Gasket; D10 X D18 X 1,5	27 03 003		
14.2	Hexagon screw; M10 X 16; A70	20 01 352		
15	Hose clamp; D50-215 X 12	28 02 126		
16	Blind flange	60002787		incl. item 16.1 – 16.3
16.1	O-ring; 43 X 7,0	27 07 088		
16.2	Locking washer; D43 X D80 X 4,0	01 17 003		
16.3	Hexagonal nut; M5	21 01 203	3	
17	O-ring; 43 X 7,0	27 07 088	2	
18	6.0 kW heating element with fuse; 3 X 400V	31 03 150		
18	6.0 kW heating element with fuse; 3 X 420V	31 03 152		
18	6.0 kW heating element with fuse; 3 X 230V	31 03 158		
18	6.0 kW heating element with fuse; 3 X 200V	31 03 151		
18	6.0 kW heating element with fuse; 3 X 440V	31 03 153		
19	Locking washer; D43 X D80 X 4,0	01 17 003		
20	Hexagonal nut; M5	21 01 203		



61006374-04

GS 502, GS 515**Pressure-independent boiler - GS 502, GS 515**

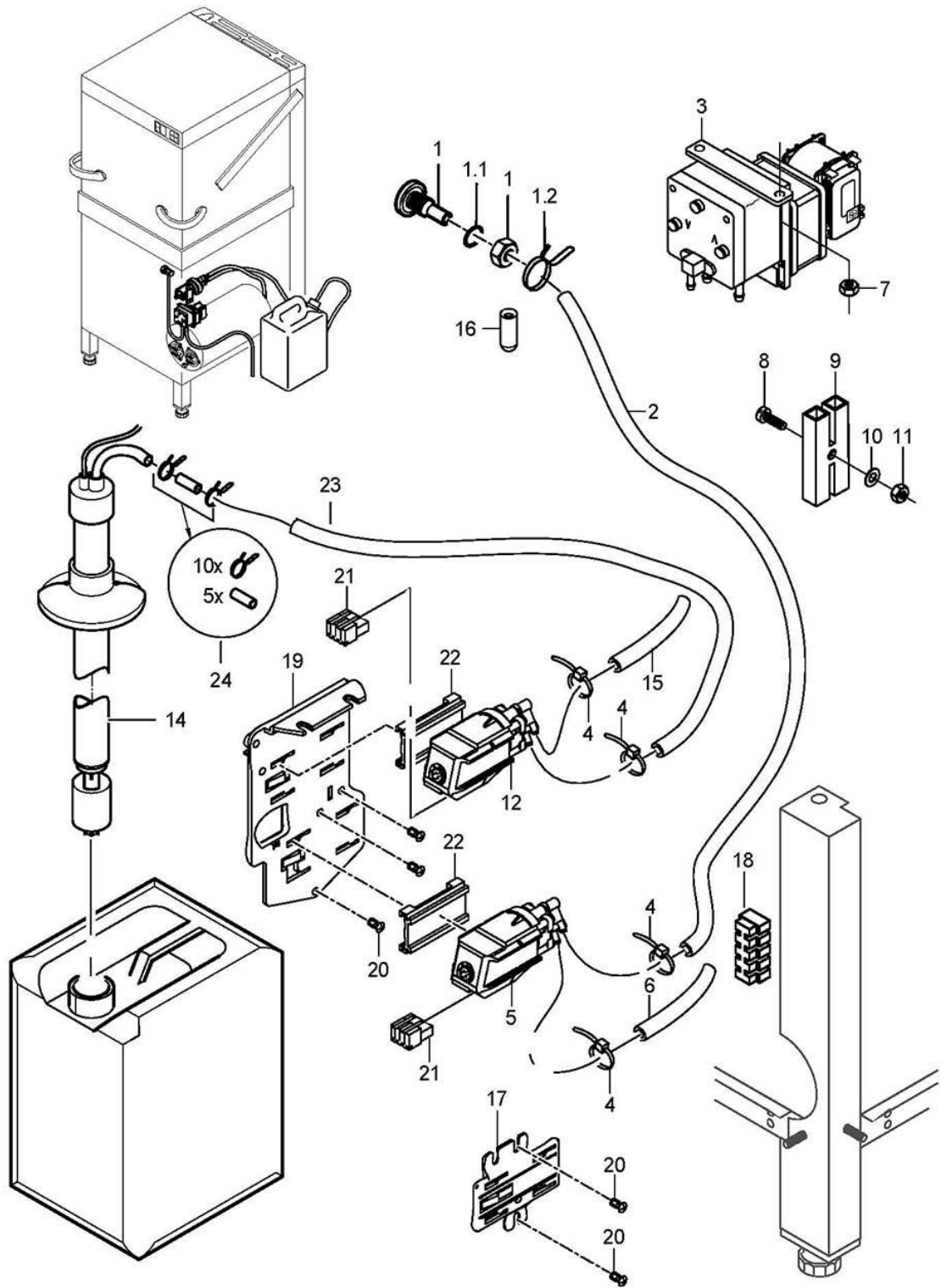
Item.	Designation	Parts no.:	Pc.	Notes
1	Water inlet, 3-part set	55 31 007		to machine no.: 470 791
1.1	Gasket; D21 X D28 X 2,0	27 09 011		replaced by 55 31 007
1.1	Gasket; D20,5 X D28,5 X 2,0	27 01 002		replaced by 55 31 007
1.1	O-ring; 20 X 3	27 07 031		
1.2	Hose clamp; D12-22 X 9	28 02 105		
3	Cable tie; 100 X 2,5	31 20 175	3	
4	Hose; DN5 X 1,5	40 01 024		700 mm; "By-the-metre" goods
5	Hose clamp; D12-22 X 9	28 02 105		
7	Pressureless boiler cpl.	61005193		to machine no.: 479 002
7	Pressure-independent boiler	61006113		From machine no.: 479 003
7.1	Hexagon screw; M10 X 16; A70	20 01 352		
7.2	Gasket; D10 X D18 X 1,5	27 03 003		
8	Hose clamp; D50-215 X 12	28 02 126		
9	O-ring; 43 X 7,0	27 07 088	2	
10	6.0 kW heating element with fuse; 3 X 400V	31 03 150		
10	6.0 kW heating element with fuse; 3 X 420V	31 03 152		
10	6.0 kW heating element with fuse; 3 X 420V	31 03 182		Australia
10	6.0 kW heating element with fuse; 3 X 230V	31 03 158		
10	6.0 kW heating element with fuse; 3 X 200V	31 03 151		
10	6.0 kW heating element with fuse; 3 X 440V	31 03 153		
10	3 kW heating element with fuse; 3 X 400V	31 03 154		
10	3 kW heating element with fuse; 3 X 420V	31 03 156		
10	3 kW heating element with fuse; 3 X 420V	31 03 183		Australia
10	3 kW heating element with fuse; 3 X 230V	31 03 166		
10	3 kW heating element with fuse; 3 X 200V	31 03 155		
10	3 kW heating element with fuse; 3 X 440V	31 03 157		
11	Blind flange	60002787		incl. item 11.1 - 11.3
11.1	Locking washer; D43 X D80 X 4,0	01 17 003		
11.2	O-ring; 43 X 7,0	27 07 088		
11.3	Hexagonal nut; M5	21 01 203	3	
12	Locking washer; D43 X D80 X 4,0	01 17 003		
13	Ratchet nut; M5	21 01 310	3	
14	Floating switch installation set	55 28 255		
14.2	Ring; D14,3 X D32 X 11	60003872		
14.1	Nut; M14 X 2, D26,8 X 8	60003989		
14.3	O-ring; 23 X 3,5	27 07 093		
14.4	O-ring; 11,11 X 1,78	27 07 079		
15	Floating switch installation set	55 28 255		Replacement for: 5528292 (Built-in electrode)
15.1	Nut; M14 X 2, D26,8 X 8	60003989		
15.2	Ring; D14,3 X D32 X 11	60003872		
15.3	O-ring; 23 X 3,5	27 07 093		
15.4	O-ring; 11,11 X 1,78	27 07 079		
17	Thermal sensor kit 1000mm	80003803		with heat-conducting foil
18	Nut; M14 X 2, D26,8 X 8	60003989		
19	Ring; D14,3 X D32 X 11	60003943		
20	O-ring; 24 X 3,0	27 07 087		
21	O-ring; 11,11 X 1,78	27 07 079		
o.P.	Boiler conversion set 12 kW; 3 X 400V	55 28 266		
o.P.	Boiler conversion set 12 kW; 3 X 420V	55 28 267		
o.P.	Boiler conversion set 12 kW; 3 X 230V	55 28 268		
o.P.	Boiler conversion set 12 kW; 3 X 200V	55 28 269		



61005375-00

GS 502, GS 515**Rinse pump - GS 502, GS 515**

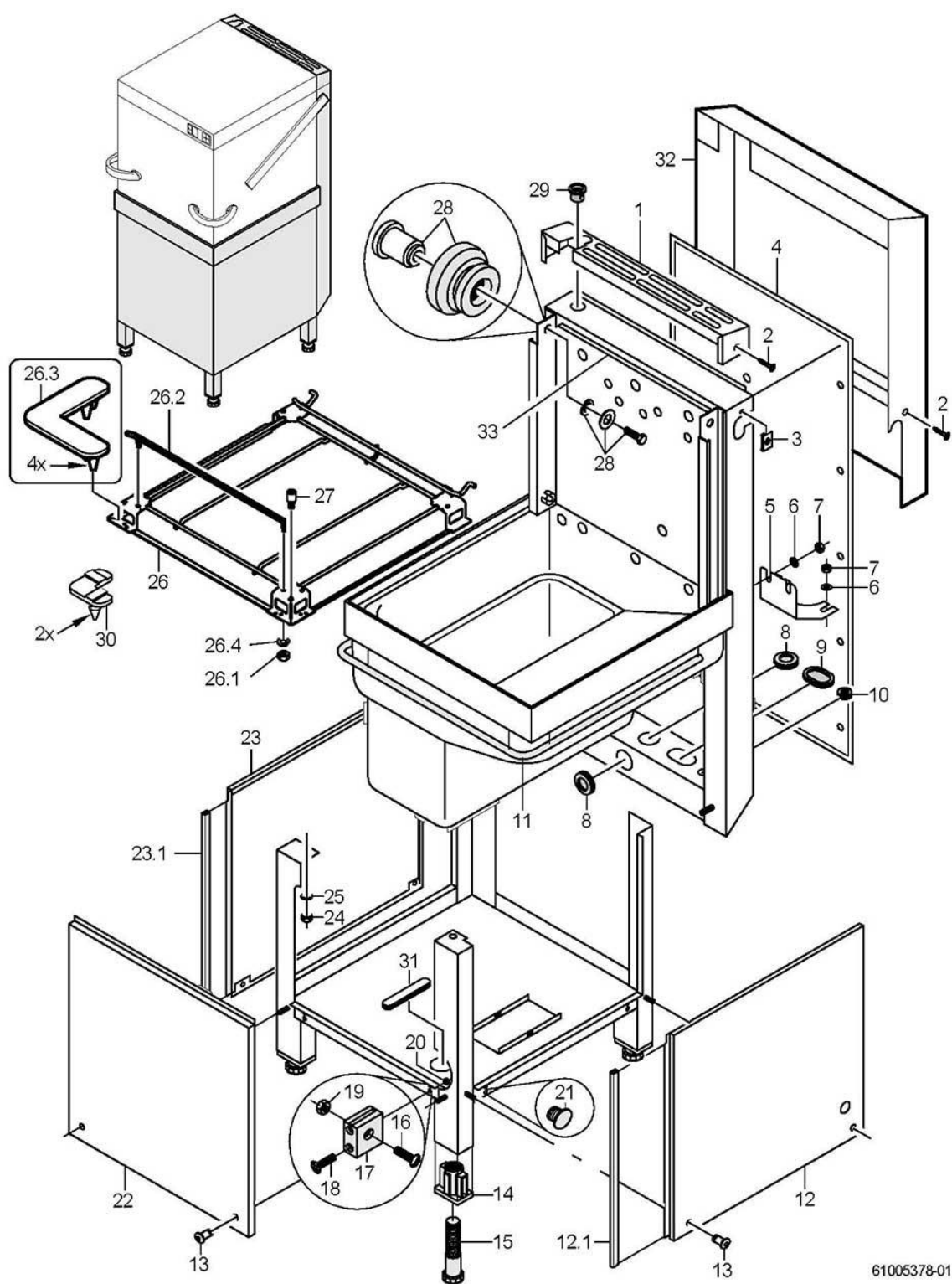
Item.	Designation	Parts no.:	Pc.	Notes
1	Reducing hose; DN16 X DN30; 1300	40 03 036		adapt
2	Hose clamp; D24-36 X 12	28 02 111		
3	Pump 0.270 kW 8/0; 220/240V/1/50HZ	31 02 477		Repair recommended only for pump housings with 7 screws
3	Pump 0.270 kW 8/0; 200V/1/50HZ	31 02 446		Repair recommended only for pump housings with 7 screws
3	Pump 0.270 kW 8/0; 200V/1/60HZ	31 02 447		Repair recommended only for pump housings with 7 screws
3	Pump 0.270 kW 8/0; 220/240V/1/60HZ	31 02 445		Repair recommended only for pump housings with 7 screws
3.1	Capacitor; 5 MIKRO F	31 13 099		
3.2	Spring washer; B8	23 03 301		
3.3	Hexagonal nut; M8	21 01 305		
3.4	Cord; D=78 X 3; SHOR 50-55;	40 04 023		
3.5	Pump impeller; FÜR UP60/UP30 MIT 50HZ	31 02 466		50 Hz
3.5	Pump impeller, installed; FÜR UP60 MIT 60HZ	31 02 587		60 Hz
3.6	Pump housing; D=80,5MM	31 02 519		
3.7	Screw for pump housing	31 01 118	7	
4	Hose elbow 90°; DN25X4,0;80X130	80001902		to machine no.: 430 228
4	Hose bend; DN25 X 4,0	61005703		From machine no.: 430 229
4	Hose elbow 90°; DN25X4,0;80X130	80001902		adapt ; GS 515
5	Conversion kit for repositioning rinse pump	55 28 274		to machine no.: 430 228
6	Hexagon screw; M6 X 10; A70	20 01 332		
7	Spring washer; B6	23 03 300		
8	Washer; D5,3 X D15 X 1,2	22 05 301	2	
9	Hexagonal nut; M5 SELBSTSICHERND	21 05 302	2	
10	Bracket; 2,0 X 45 X 177,5	61005696		From machine no.: 430 229
11	Guard plate	80002255		From machine no.: 430 229
11.1	Hexagon screw; M6 X 10; A70	20 01 332	2	
11.2	Spring washer; B6	23 03 300	2	



61005377-03

GS 502, GS 515**Dosage - GS 502, GS 515**

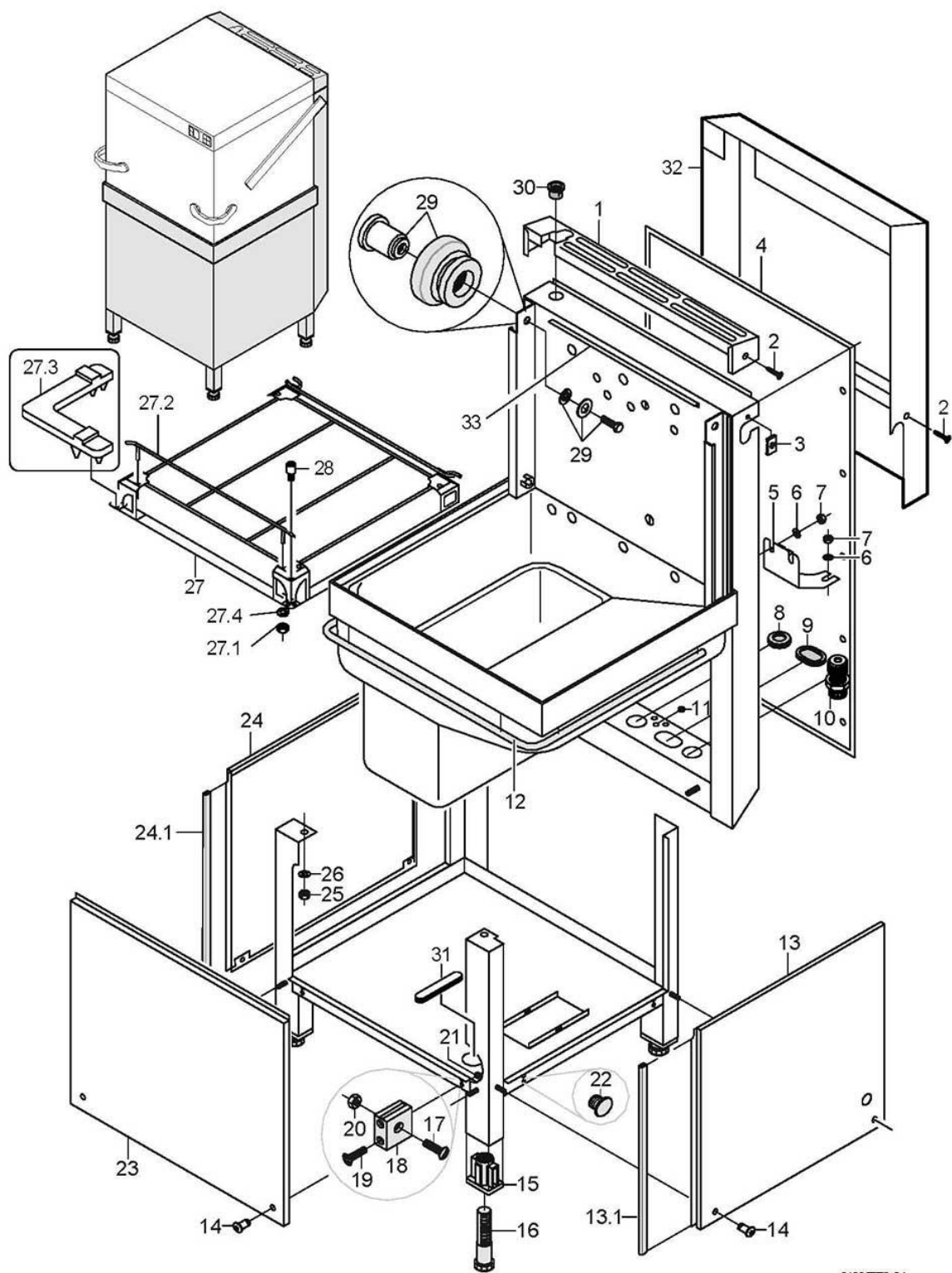
Item.	Designation	Parts no.:	Pc.	Notes
1	Dosing nipple set, M10 X 29; SW5	61005883		incl. item 1.1 - 1.2
1.1	O-ring; 10 X 2,5	27 07 030		
1.2	Wire hose clamp; D8,6 X 1	28 02 348		
2	Hose; DN5 X 1,5	40 01 024		300 mm; "By-the-metre" goods
3	Detergent dosing pump ESP166; 230V/50HZ	80003328		up to WPS 002; Wall installation necessary
3	Installation kit for detergent dosing device MP28	55 28 285		from WPS 003; contains all parts for retrofit of detergent dosage unit
4	Wire hose clamp; D8,6 X 1	28 02 348		
5	Fluidos DT "Detergent" kit; 115-240V/50-60HZ	31 02 597		
5	Fluidos DT "Detergent" retrofit kit	30000008		from WPS 003; contains all parts for retrofit of detergent dosage unit
6	Hose; DN5 X 1,5	40 01 024		3500 mm; "By-the-metre" goods
7	Hexagonal nut; M4 SELBSTSICHERND	21 05 300	2	to machine no.: 463 833
7	PT screw, KA 50 X 13	20 17 306	2	From machine no.: 463 834
8	Cylinder head screw, M3 X 16	20 09 205		to machine no.: 463 833
9	Coupler piece, insulated; 250V;20AWG;25A;2-POLIG	31 12 021		to machine no.: 463 833
10	Washer; D3,2 X D6 X 0,5	22 02 201		to machine no.: 463 833
11	Hexagonal nut; M3	21 01 301		to machine no.: 463 833
12	ELT 10 replacement set	55 28 278		to machine no.: 464 394
12	Fluidos DB "Rinse aid" kit; 115-240V/50-60HZ	31 02 598		From machine no.: 464 395
14		30000011		incl. item 14.1 – 14.2
15	Hose; DN5 X 1,5	40 01 024		700 mm; "By-the-metre" goods
16	End cap; D5,7 X 25,4	35 06 180		
17	Bracket; 75 X 82,5	80002906		From machine no.: 463 834
18	Binding post; 5-POLIG; 6QMM; 56,5LG	31 09 230		From machine no.: 463 834
19	Adapter plate; 1,5 X 80 X 100	60003688		
20	PT screw, KB 50 X 16	20 17 301	3	
21	Macro-module plug; RAST5;4-POLIG UNCOD.	31 12 094		
22	Adapter; 11,4 X 33,5 X 57,5	80003775		From machine no.: 1002078
23	Hose; DN5 X 1,5	40 01 027		1000 mm; "By-the-metre" goods
24		30000012		



61005378-01

GS 502, GS 515**Chassis, container and panelling - GS 502**

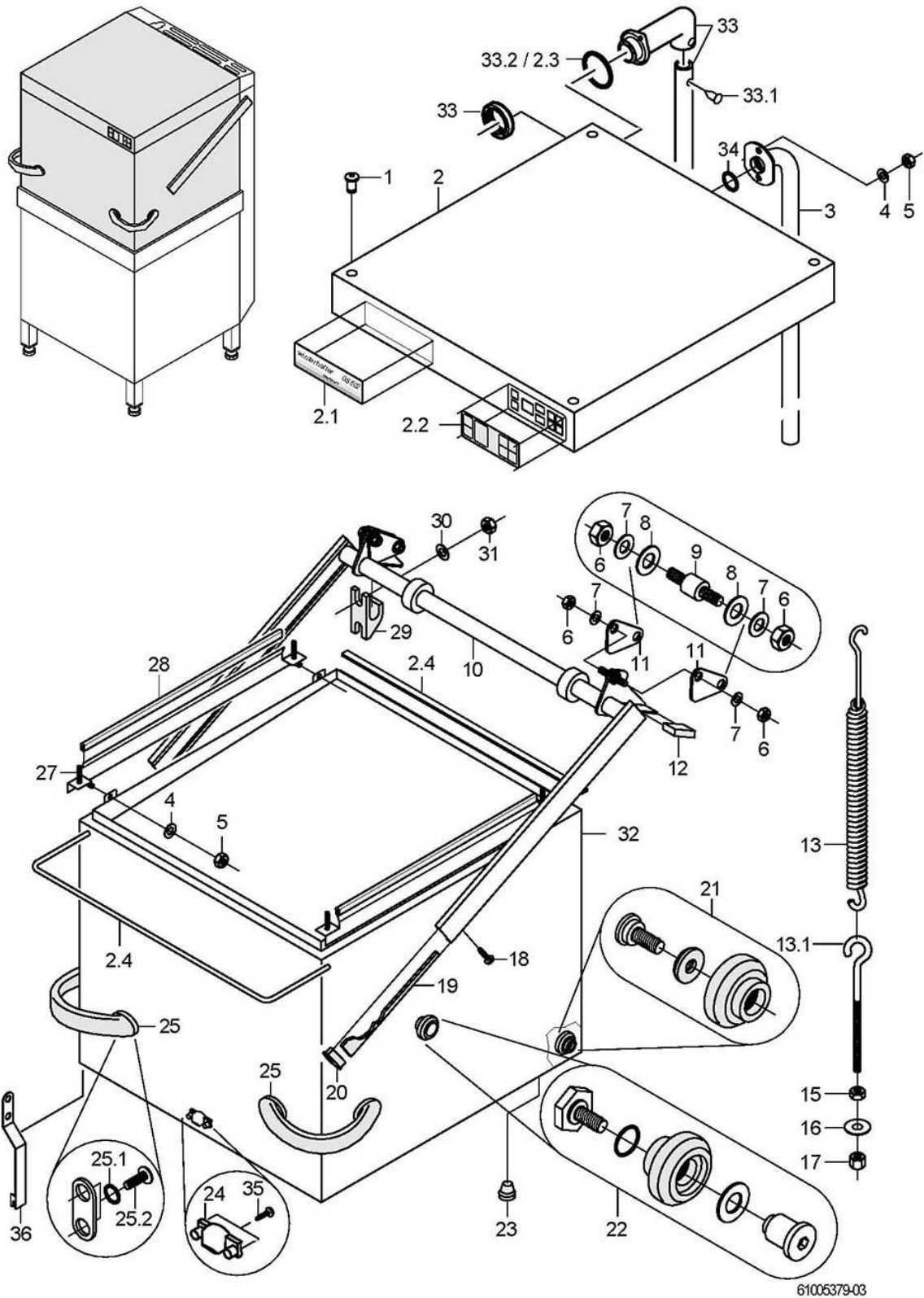
Item.	Designation	Parts no.:	Pc.	Notes
1	Top panelling; 1,0 X 276,6 X 851,16	61004865		
2	Sheet metal screw; ST 3,9 X 13	20 20 310	12	
3	Sheet metal nut; B 3,9	21 17 301	12	
4	Rear wall panelling; 0,8 X 608 X 1210,5	61004902		
5	Bracket; 1,5 X 149,9 X 210	61005566		
6	Washer; D6,4 X D18 X 1,6	22 05 302	4	
7	Hexagonal nut; M6 SELBSTSICHERND	21 05 304	4	
8	Membrane spout; 6,0 X D57 X D73; D40	61004889		
9	Membrane spout; 6,0 X 58 X 76; D17	61004891		
10	Hose nozzle; 6,25 X D15; D8,5	61004890	3	
11	Profile seal; D25	40 04 016		1890 mm; "By-the-metre" goods
12	Housing panel right	61005199		to machine no.: 545 310
12	Housing panel right	61006593		From machine no.: 545 311
12.1	Sealing profile; 1,0 - 2,0MM	40 04 006		560 mm; "By-the-metre" goods
13	Truss-head screw with retaining ring; M5 X 15	70005097	6	
14	Threaded insert; RD26 X 1/8; 39 X 59 X85	61004787	4	
15	Foot cleats; RD26 X 1/8; SW40 X 135	61004786	4	
16	Pan head screw; M5 X 16	20 10 224	4	
17	Support; 20 X 7,8 X 27,8	35 01 068	4	
18	Pan head screw; M4 X 30	20 10 316	8	
19	Hexagonal nut; M5	21 01 303	4	
20	Hexagonal nut; M4	21 01 302	8	
21	Cap; D4,8	35 03 012		
22	Front panelling cpl.	61005086		
23	Housing panel left compl.	61005200		incl. item 23.1
23.1	Sealing profile; 1,0 - 2,0MM	40 04 006		560 mm; "By-the-metre" goods
24	Hexagonal nut; M6 SELBSTSICHERND	21 05 304	4	
25	Washer; D6,4 X D18 X 1,6	22 05 302	4	
26	Rack carrier, pre-assembled; KÖRBE 500/WANDABST.170	61006030		Racks 500x500 Wall distance 170mm
26	Rack carrier cpl, 420 rack guide; KÖRBE 420/WANDABST.170	61005682		Racks 420x500mm; Wall distance 170mm
26	Rack carrier cpl, 420 rack guide; KÖRBE 420/WANDABST.235	61005854		Racks 420x500mm; Wall distance 235mm
26	Rack carrier cpl, 420 rack guide; WANDABSTAND 250 MM	61005264		Racks 420x500mm; Wall distance 250mm
26.1	Hexagonal nut; M6	21 01 304	2	
26.2	Guide rail cpl.; 519,27 LG	61004267		
26.3	Buffer; 17,5 X 63 X 63	61005559		
26.4	Spring washer; B6	23 03 300	2	
27	Guiding pin cpl.	61005090		Corner version
28	Roller set cpl.	61005206		for both sides; up to mach. no.: 408 497 (ca. 11/99) order 2 bushings 61004843 in addition
29	Snap-in passage; D23,8	31 10 144		
30	Buffer	61005256		
31	Plug; 6,5 X 14 X 59	61006152		
32	Vapour guard GS 502	80002998		Accessories
33	Kit steam elbow	80003539		
o.P.	Kit working height elevation to 900mm	80003174		
o.P.	Kit working height elevation to 950mm	80003175		



61005773-01

GS 502, GS 515**Chassis, container and panelling - GS 515**

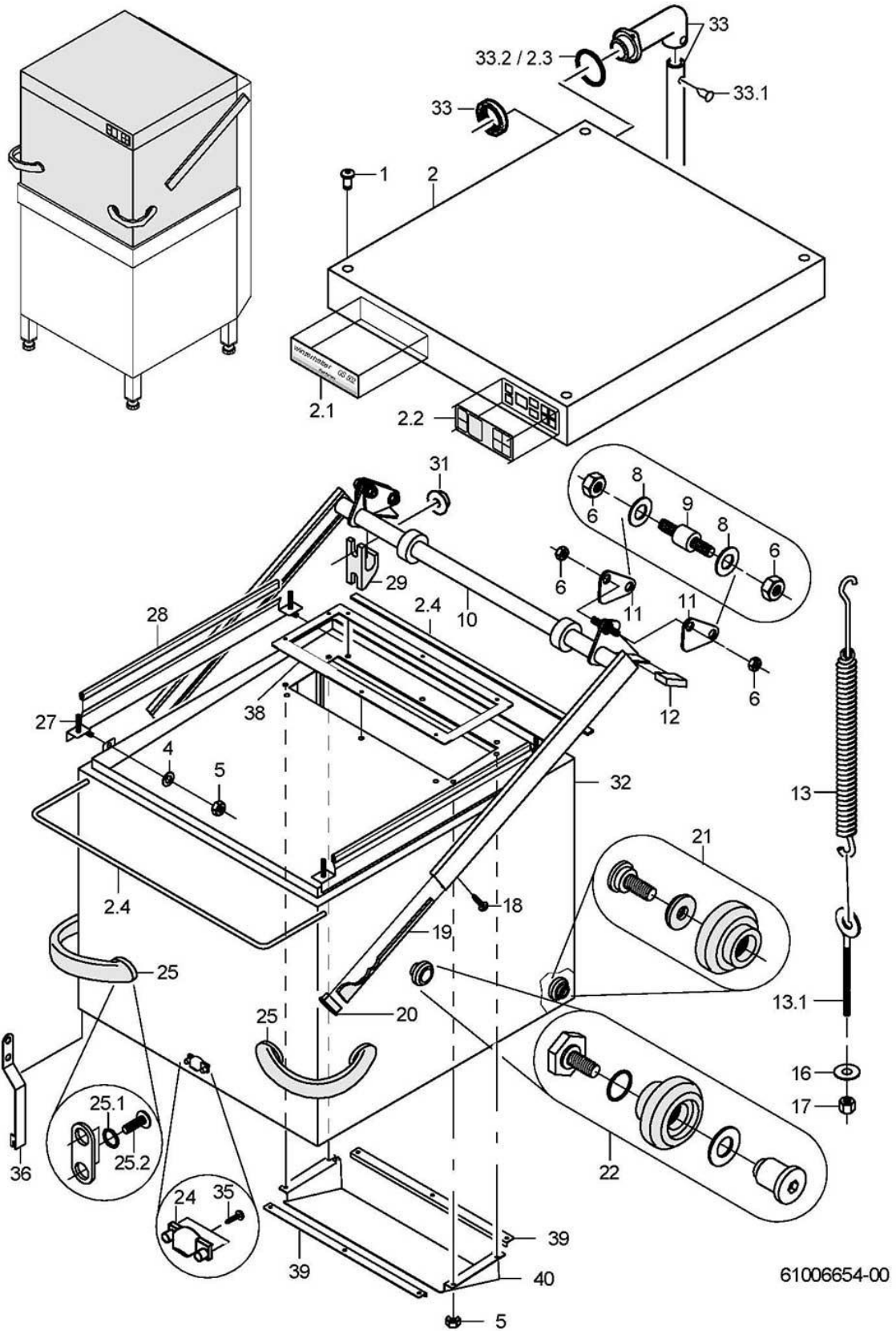
Item.	Designation	Parts no.:	Pc.	Notes
1	Top panelling; 1,0 X 298,64 X 968,8	61005561		
2	Sheet metal screw; ST 3,9 X 13	20 20 310	12	
3	Sheet metal nut; B 3,9	21 17 301	12	
4	Rear wall panelling; 0,8 X 704 X 1269,6	61005557		
5	Bracket; 1,5 X 138,3 X 200	61005731		
6	Washer; D6,4 X D18 X 1,6	22 05 302	4	
7	Hexagonal nut; M6 SELBSTSICHERND	21 05 304	4	
8	Membrane spout; 6,0 X D57 X D73; D40	61004889		
9	Membrane spout; 6,0 X 58 X 76; D17	61004891		
10	Cable gland; PG21; 10-18 MM; IP68	31 10 070		
10	Cable gland; PG29; 16-25 MM; IP68	31 10 123		
11	Hose nozzle; 6,25 X D15; D8,5	61004890		
12	Profile seal; D25	40 04 016		1990 mm; "By-the-metre" goods
13	Housing panel right	61005738		to machine no.: 551 352
13	Housing panel right	61006594		From machine no.: 551 353
13.1	Sealing profile; 1,0 - 2,0MM	40 04 006	6	560 mm; "By-the-metre" goods
14	Truss-head screw with retaining ring; M5 X 15	70005097		
15	Threaded insert; RD26 X 1/8; 39 X 59 X85	61004787	4	
16	Foot cleats; RD26 X 1/8; SW40 X 135	61004786	4	
17	Pan head screw; M5 X 16	20 10 224	4	
18	Support; 20 X 7,8 X 27,8	35 01 068	4	
19	Pan head screw; M4 X 30	20 10 316	8	
20	Hexagonal nut; M5	21 01 303	4	
21	Hexagonal nut; M4	21 01 302	8	
22	Cap; D4,8	35 03 012		
23	Front panelling cpl.	61005554		
24	Housing panel left compl.	61005737		incl. item 24.1
24.1	Sealing profile; 1,0 - 2,0MM	40 04 006		560 mm; "By-the-metre" goods
25	Hexagonal nut; M6 SELBSTSICHERND	21 05 304	4	
26	Washer; D6,4 X D18 X 1,6	22 05 302	4	
27	Rack carrier, pre-assembled	61006032		incl. item 27.1 - 27.4
27.1	Hexagonal nut; M6	21 01 304	2	
27.2	Guide rail cpl.; 519,27 LG	61004267		
27.3	Buffer; 17,5 X 63 X 63	61005559		
27.4	Spring washer; B6	23 03 300		
28	Guiding pin cpl.	61005090		Corner version
29	Roller set cpl.	61005206		for both sides
30	Snap-in passage; D23,8	31 10 144		
31	Plug; 6,5 X 14 X 59	61006152		
32	Vapour guard GS 515	80003024		Accessories
33	Kit steam elbow	80003801		
o.P.	Kit working height elevation to 900mm	80003174		
o.P.	Kit working height elevation to 950mm	80003175		



GS 502, GS 515

Hood - GS 502

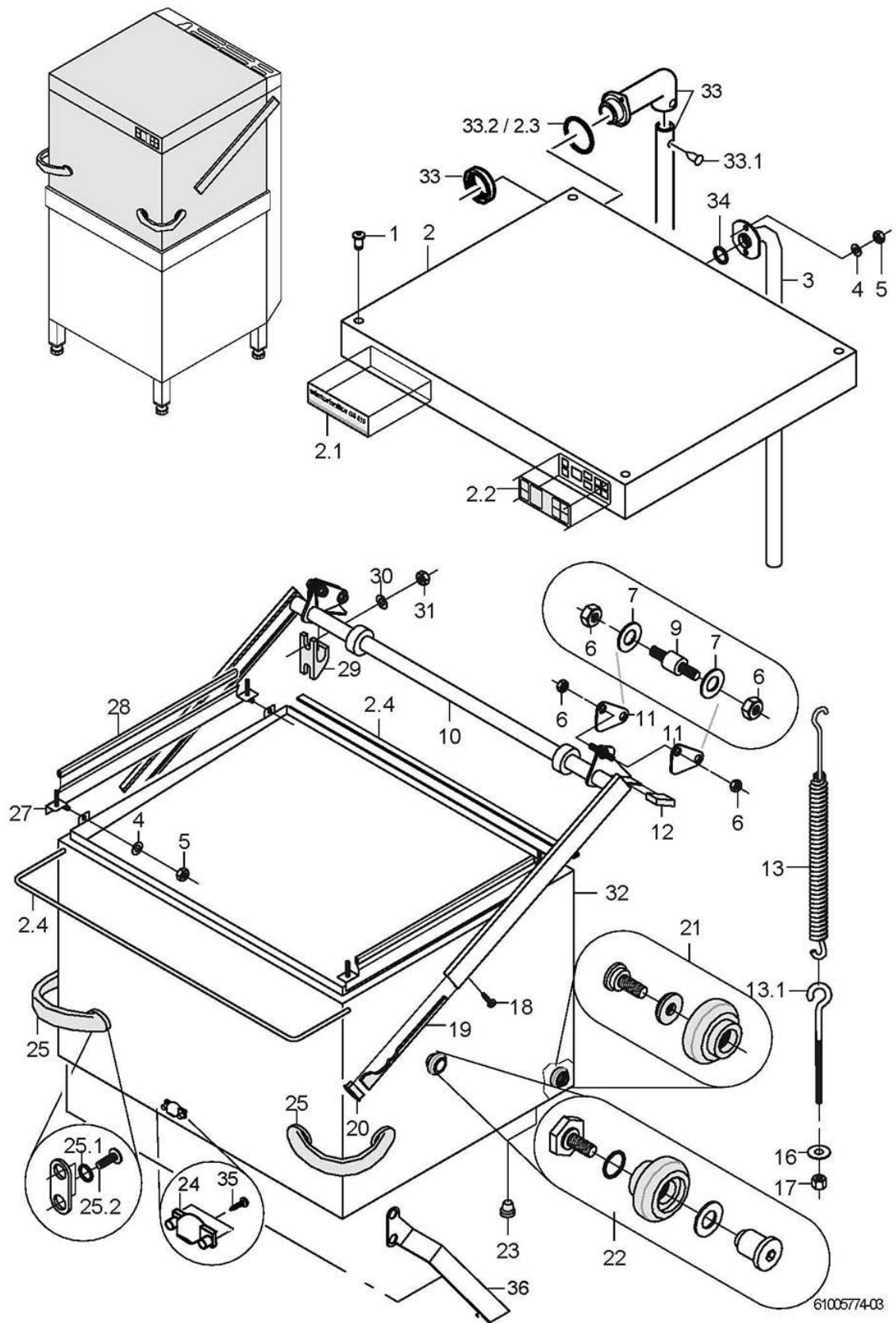
Item.	Designation	Parts no.:	Pc.	Notes
1	Truss-head screw with retaining ring; M5 X 15	70005097	4	
2	Hood cover with operat. foil	61005338		to machine no.: 470 791
2	Hood cover with operat. foil	61006090		From machine no.: 470 792
2.1	Plate -Winterhalter GS 502-; 0,175 X 35 X 126	61006610		
2.2	Pad -Operating Panel-; 0,175 X 50 X 180	31 24 223		
2.3	O-ring; 28 X 2,5	27 07 049		
2.4	Gasket set, hood	80003571		
3	Pipe; 635 LG	61005021		up to mach. no. 431 888 ; no longer deliverable; contact with factory necessary
4	Washer; D5,3 X D10 X 1,0	22 01 300	2	
5	Hexagonal nut; M5 SELBSTSICHERND	21 05 302	10	
6	Hexagonal nut; M8 SELBSTSICHERND	21 05 306	8	
7	Washer; D8,4 X D17 X 1,6	22 01 303	8	up to 10/2003
8	Washer; D10,5 X D18 X 1,6	22 02 206	4	
9	Shaft; D10 X 34	61005054	4	
10	Lever	61004854		
11	Lug; 2,0 X 45,2 X 81,6	61005055	4	
12	Buffer; 14 X 28 X 31	61005067	2	
13	Set tension spring; L0=733;L1=1001;F1=1570	61006636	2	Spring clamp 88000468 necessary to replace the cover tension springs
13.1	Eye screw; M10 X 150	61002816	2	
15	Hexagonal nut; M10	21 02 306	2	
16	Washer; D10,5 X D30 X 2,5	22 02 304	2	
17	Hexagonal nut; M10	21 01 006	2	
18	Raised head screw with internal hexagon; M6 X 12 MIT FLANSCH	20 10 002	2	
19	Locking brake; 14 X 15 X 121	61005048	2	
20	Plug; 21 X 26 X 55	61004866	4	
21	Roller set cpl.	61005202		to machine no.: 408 497; for both sides
21	Roller set cpl.	61005333		From machine no.: 408 498; for both sides
22	Roller set cpl.	61005203		for both sides
23	Cap; D4,8	35 03 012	2	
24	Magnet holder; 12,9 X 15 X 40	61006243		incl. magnet
25	Handle cpl.	61005204	2	incl. item 25.1 – 25.2
25.1	O-ring; 6,5 X 2,5	27 07 063	8	
25.2	Raised head screw with internal hexagon; M6 X 12 MIT FLANSCH	20 10 002	8	
27	Bracket cpl.; 592 LG	61005101	2	
29	Door lever bearing; 70 X 21 X 39,25	35 01 066	4	
30	Washer; D8,4 X D17 X 1,6	22 01 303	8	
31	Hexagonal nut; M6 SELBSTSICHERND	21 05 304	8	
32	Hood cpl.	61005324		to machine no.: 470 791
32	Hood	61006033		From machine no.: 470 792
33	Cable pipe cpl.	61005849		From machine no.: 431 889
33.1	Pin; 3,9 X 4,0 X 9,0	25 09 322		
33.2	O-ring; 28 X 2,5	27 07 049		
34	O-ring; 20 X 3	27 07 031		
35	Plate screw; ST 3,9 X 9,5	20 20 307	2	
36	Kit rack stop GS 502	80003157		extras



61006654-00

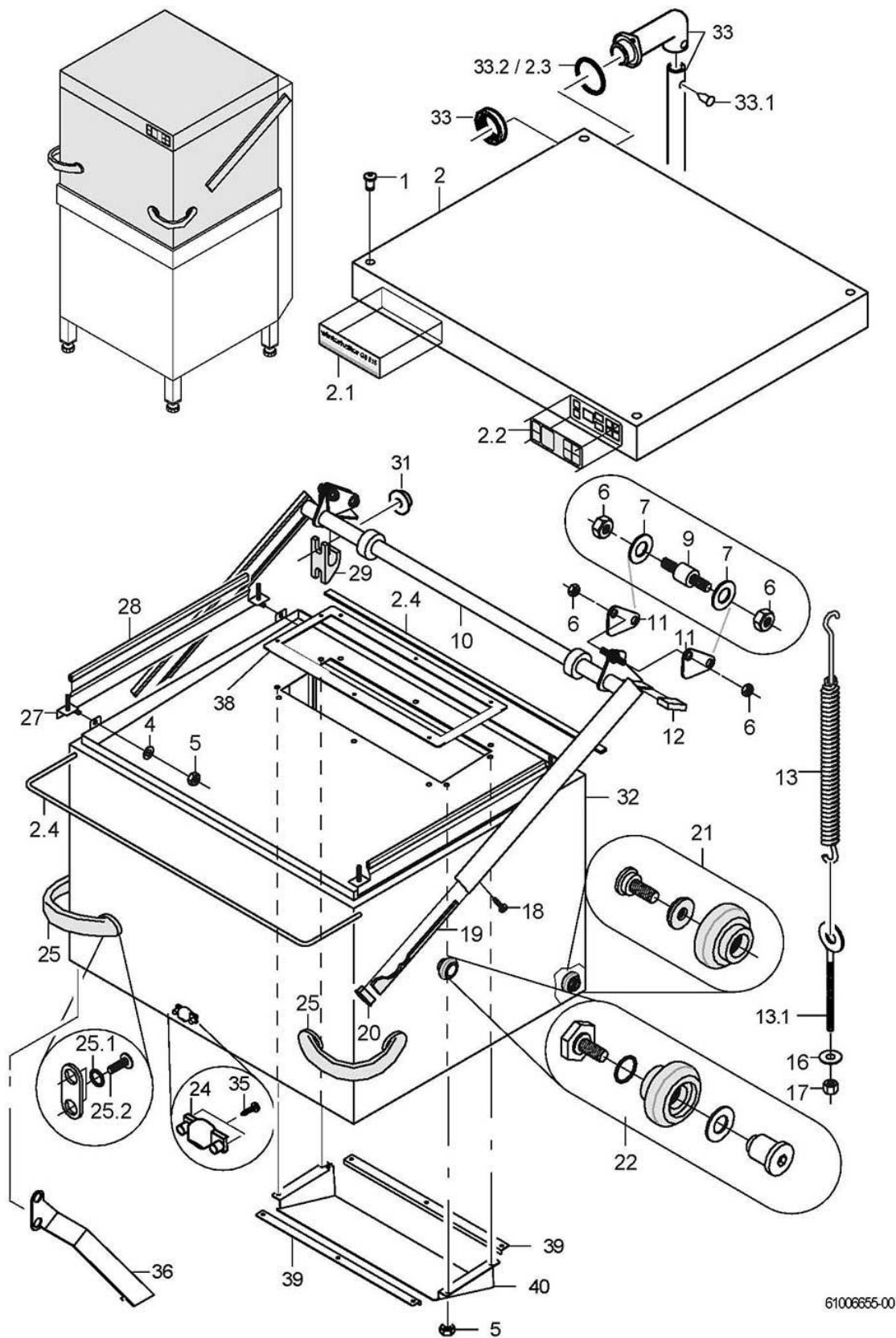
GS 502, GS 515**Hood - GS 502 Energy / Energy+**

Item.	Designation	Parts no.:	Pc.	Notes
1	Truss-head screw with retaining ring; M5 X 15	70005097	4	
2	Hood cover with operat. foil; GS502 ENERGY	80003759		GS 502 Energy
2.1	Plate "Winterh. GS502 Energy"; 0,175 X 35 X 126	61006663		
2.2	Pad -Operating Panel-; 0,175 X 50 X 180	31 24 223		
2.3	O-ring; 28 X 2,5	27 07 049		
2.4	Gasket set, hood	80003571		
2	Hood cover with operat. foil; GS502 ENERGY+	80003781		GS 502 Energy+
2.1	Plate "Winterh. GS502 Energy+"; 0,175 X 35 X 126	61006664		
2.2	Pad -Operating Panel-; 0,175 X 50 X 180	31 24 223		
2.3	O-ring; 28 X 2,5	27 07 049		
2.4	Gasket set, hood	80003571		
4	Washer; D5,3 X D10 X 1,0	22 01 300	2	
5	Hexagonal nut; M5 SELBSTSICHERND	21 05 302	10	
6	Hexagonal nut; M8 SELBSTSICHERND	21 05 306	8	
8	Washer; D10,5 X D18 X 1,6	22 02 206	4	
9	Shaft; D10 X 34	61005054	4	
10	Lever	61004854		
11	Lug; 2,0 X 45,2 X 81,6	61005055	4	
12	Buffer; 14 X 28 X 31	61005067	2	
13	Set tension spring; L0=733;L1=1001;F1=1570	61006636	2	Spring clamp 88000468 necessary to replace the cover tension springs
13.1	Screw; M10 X 80	20 06 339		
16	Washer; D10,5 X D30 X 2,5	22 02 304	2	
17	Hexagonal nut; M10	21 01 006	2	
18	Raised head screw with internal hexagon; M6 X 12 MIT FLANSCH	20 10 002	2	
19	Locking brake; 14 X 15 X 121	61005048	2	
20	Plug; 21 X 26 X 55	61004866	4	
21	Roller set cpl.	61005333		for both sides
22	Roller set cpl.	61005203		for both sides
24	Magnet holder; 12,9 X 15 X 40	61006243		incl. magnet
25	Handle cpl.	61005204	2	incl. item 25.1 – 25.2
25.1	O-ring; 6,5 X 2,5	27 07 063		
25.2	Raised head screw with internal hexagon; M6 X 12 MIT FLANSCH	20 10 002		
27	Bracket cpl.; 592 LG	61005101	2	
28	Sealing profile; 1,0 - 2,0MM	40 04 006		590 mm; "By-the-metre" goods
29	Door lever bearing; 70 X 21 X 39,25	35 01 066	4	
31	Ratchet nut; M6	21 01 311	8	
32	Hood	80003411		
33	Cable pipe cpl.	61005849		incl. item 33.1 - 33.2
33.1	Pin; 3,9 X 4,0 X 9,0	25 09 322		
33.2	O-ring; 28 X 2,5	27 07 049		
35	Plate screw; ST 3,9 X 9,5	20 20 307	2	
36	Kit rack stop GS 502	80003157		Additional equipment
38	Seal; 2,0 X 176 X 440	80003414		
39	Elbow; 1,25 X 27,3 X 395	80003413	2	
40	Cover; 1,25 X 155 X 555,6	80003305		



GS 502, GS 515**Hood - GS 515**

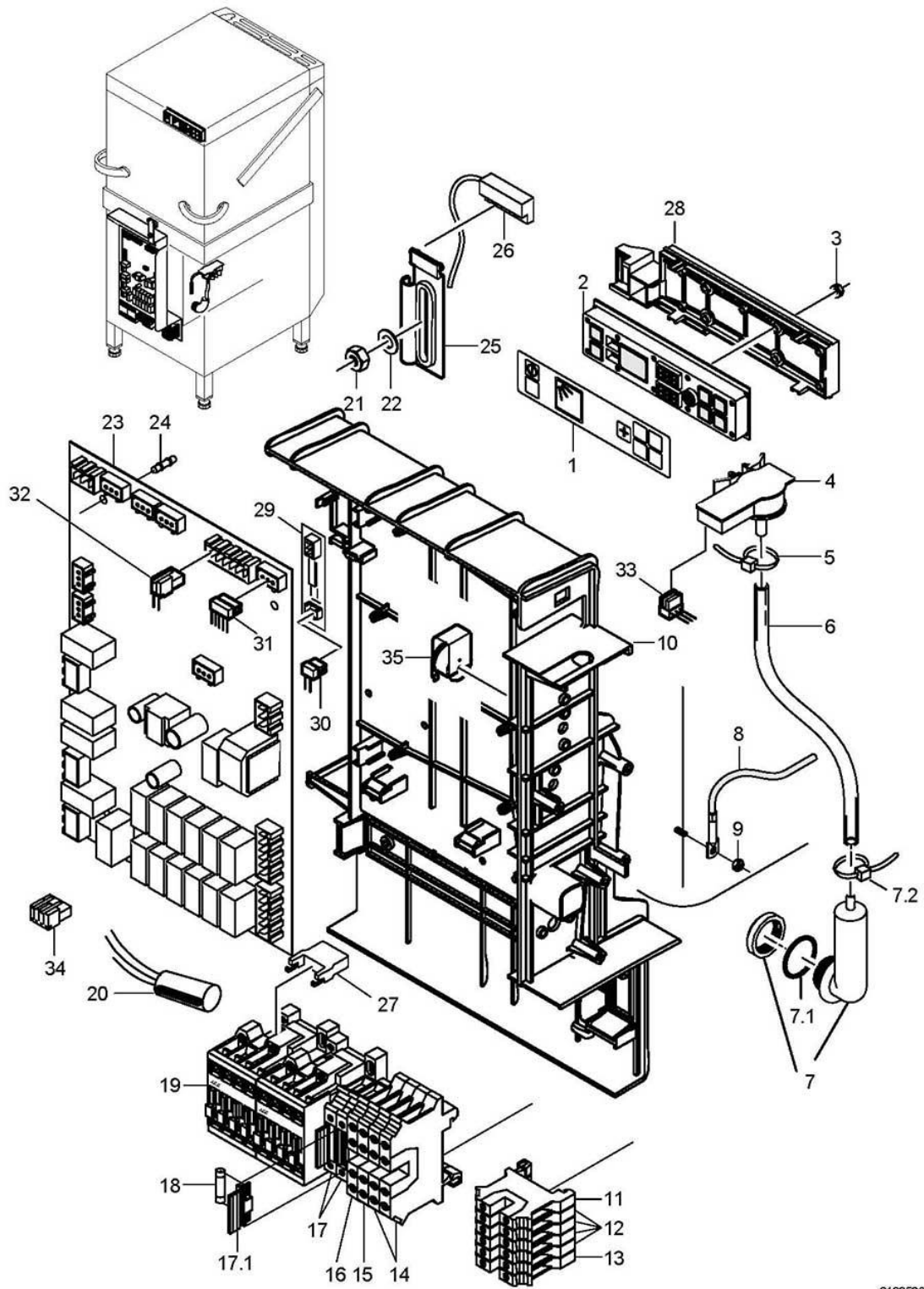
Item.	Designation	Parts no.:	Pc.	Notes
1	Truss-head screw with retaining ring; M5 X 15	70005097	4	
2	Hood cover with operat. foil	61005736		to machine no.: 470 791
2	Hood cover with operat. foil	61006091		From machine no.: 470 792
2.1	Plate -Winterhalter GS 515-; 0,175 X 35 X 126	61006611		
2.2	Pad -Operating Panel-; 0,175 X 50 X 180	31 24 223		
2.3	O-ring; 28 X 2,5	27 07 049		
2.4	Gasket set, hood	80003571		
3	Pipe; 635 LG	61005021		no longer deliverable; Contact with the factory necessary
4	Washer; D5,3 X D10 X 1,0	22 01 300	2	
5	Hexagonal nut; M5 SELBSTSICHERND	21 05 302	10	
6	Hexagonal nut; M8 SELBSTSICHERND	21 05 306	8	
7	Washer; D10,5 X D18 X 1,6	22 02 206	4	
9	Shaft; D10 X 34	61005054	4	
10	Hood lever cpl.	61005495		
11	Lug; 2,0 X 45,17 X 81,77	61005760	4	
12	Buffer; 14 X 15 X 31	61005730	4	
13	Set tension spring; L0=733;L1=1001;F1=1570	61006636	2	Spring clamp 88000468 necessary to replace the cover tension springs
13.1	Eye screw; M10 X 150	61002816	2	
16	Washer; D10,5 X D30 X 2,5	22 02 304	2	
17	Hexagonal nut; M10	21 01 006	2	
18	Raised head screw with internal hexagon; M6 X 12 MIT FLANSCH	20 10 002	2	
19	Locking brake; 14 X 15 X 121	61005048	2	
20	Plug; 21 X 26 X 55	61004866	4	
21	Roller set cpl.	61005333		for both sides
22	Roller set cpl.	61005203		for both sides
23	Cap; D4,8	35 03 012	2	
24	Magnet holder; 12,9 X 15 X 40	61006243		incl. magnet
25	Handle cpl.	61005204	2	incl. item 25.1 – 25.2
25.1	O-ring; 6,5 X 2,5	27 07 063	8	
25.2	Raised head screw with internal hexagon; M6 X 12 MIT FLANSCH	20 10 002	8	
27	Bracket cpl.; 592 LG	61005101	2	
29	Door lever bearing; 70 X 21 X 39,25	35 01 066	4	
30	Washer; D8,4 X D17 X 1,6	22 01 303	8	
31	Hexagonal nut; M6 SELBSTSICHERND	21 05 304	8	
32	Hood cpl.	61005460		to machine no.: 470 791
32	Hood	61006038		From machine no.: 470 792
33	Cable pipe cpl.	61005849		From machine no.: 431 889
33.1	Pin; 3,9 X 4,0 X 9,0	25 09 322		
33.2	O-ring; 28 X 2,5	27 07 049		
34	O-ring; 20 X 3	27 07 031		
35	Plate screw; ST 3,9 X 9,5	20 20 307	2	
36	Kit rack stop GS 515	80003158		extras



61006655-00

GS 502, GS 515**Hood - GS 515 Energy / Energy+**

Item.	Designation	Parts no.:	Pc.	Notes
1	Truss-head screw with retaining ring; M5 X 15	70005097	4	
2	Hood cover with operat. foil; GS515 ENERGY	80003760		GS 515 Energy
2.1	Plate "Winterh. GS515 Energy"; 0,175 X 35 X 126	61006665		
2.2	Pad -Operating Panel-; 0,175 X 50 X 180	31 24 223		
2.3	O-ring; 28 X 2,5	27 07 049		
2.4	Gasket set, hood	80003571		
2	Hood cover with operat. foil; GS515 ENERGY+	80003782		GS 515 Energy+
2.1	Plate "Winterh. GS515 Energy+"; 0,175 X 35 X 126	61006666		
2.2	Pad -Operating Panel-; 0,175 X 50 X 180	31 24 223		
2.3	O-ring; 28 X 2,5	27 07 049		
2.4	Gasket set, hood	80003571		
4	Washer; D5,3 X D10 X 1,0	22 01 300	2	
5	Hexagonal nut; M5 SELBSTSICHERND	21 05 302	10	
6	Hexagonal nut; M8 SELBSTSICHERND	21 05 306	8	
8	Washer; D10,5 X D18 X 1,6	22 02 206	4	
9	Shaft; D10 X 34	61005054	4	
10	Hood lever cpl.	61005495		
11	Lug; 2,0 X 45,17 X 81,77	61005760	4	
12	Buffer; 14 X 15 X 31	61005730	2	
13	Set tension spring; L0=733;L1=1001;F1=1570	61006636	2	Spring clamp 88000468 necessary to replace the cover tension springs
13.1	Screw; M10 X 80	20 06 339		
16	Washer; D10,5 X D30 X 2,5	22 02 304	2	
17	Hexagonal nut; M10	21 01 006	2	
18	Raised head screw with internal hexagon; M6 X 12 MIT FLANSCH	20 10 002	2	
19	Locking brake; 14 X 15 X 121	61005048	2	
20	Plug; 21 X 26 X 55	61004866	4	
21	Roller set cpl.	61005333		for both sides
22	Roller set cpl.	61005203		for both sides
24	Magnet holder; 12,9 X 15 X 40	61006243		incl. magnet
25	Handle cpl.	61005204	2	incl. item 25.1 – 25.2
25.1	O-ring; 6,5 X 2,5	27 07 063		
25.2	Raised head screw with internal hexagon; M6 X 12 MIT FLANSCH	20 10 002		
27	Bracket cpl.; 592 LG	61005101	2	
28	Sealing profile; 1,0 - 2,0MM	40 04 006		590 mm; "By-the-metre" goods
29	Door lever bearing; 70 X 21 X 39,25	35 01 066	4	
31	Ratchet nut; M6	21 01 311	8	
32	Hood	80003467		
33	Cable pipe cpl.	61005849		incl. item 33.1 - 33.2
33.1	Pin; 3,9 X 4,0 X 9,0	25 09 322		
33.2	O-ring; 28 X 2,5	27 07 049		
35	Plate screw; ST 3,9 X 9,5	20 20 307	2	
36	Kit rack stop GS 515	80003158		Additional equipment
38	Seal; 2,0 X 176 X 440	80003414		
39	Elbow; 1,25 X 27,3 X 395	80003413	2	
40	Cover; 1,25 X 155 X 555,6	80003305		

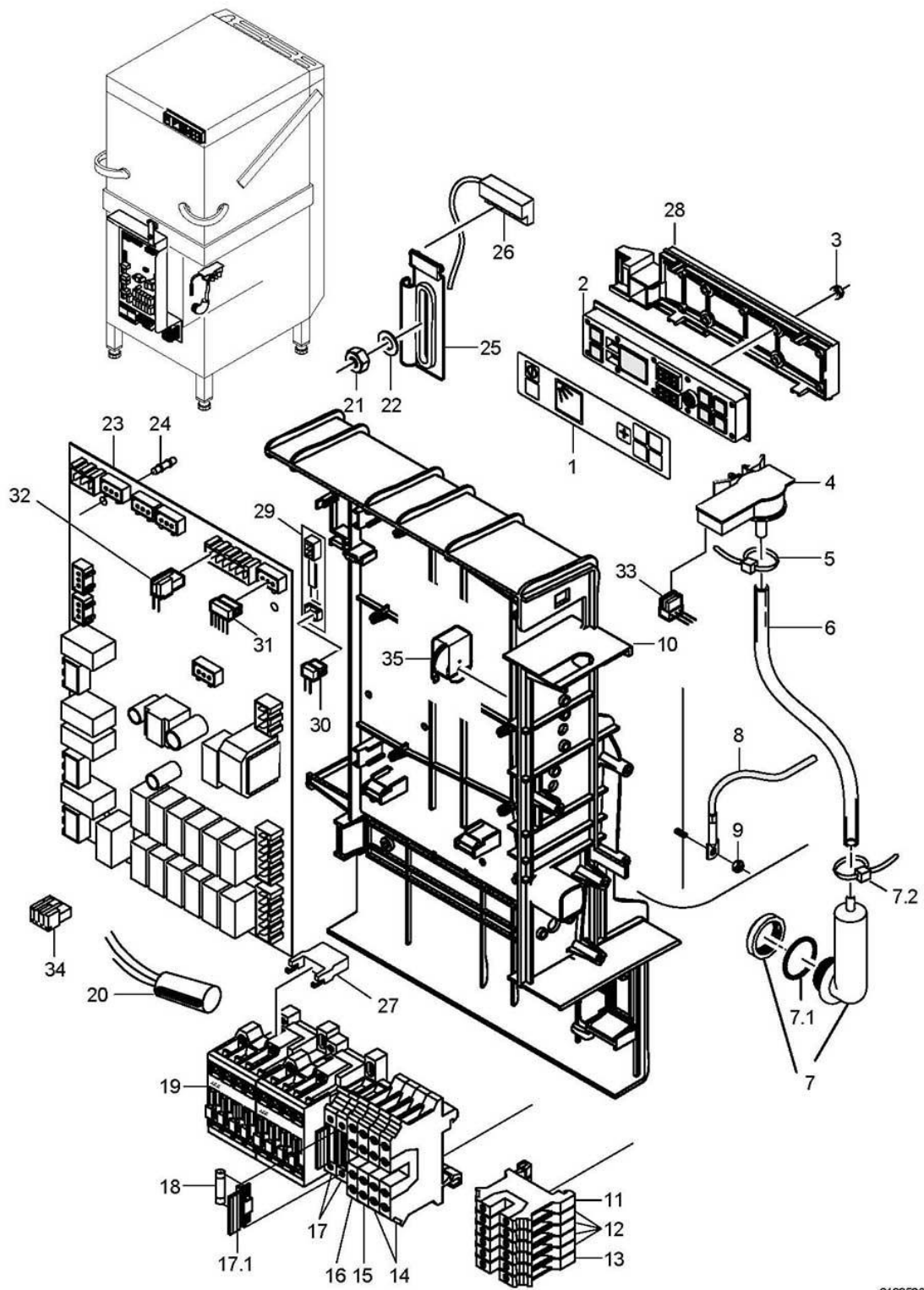


61005380-02

GS 502, GS 515**Electric parts - GS 502, GS 515**

Item.	Designation	Parts no.:	Pc.	Notes
1	Pad -Operating Panel-; 0,175 X 50 X 180	31 24 223		
2	Operating panel; 25 X 55 X 210	31 24 222		
3	Nut with soft push; M3, SW7, MAX. 160 NM	31 13 116	10	
3	Nut-and-washer assembly; M3	21 01 312	4	
4	Pressure transmitter; 0-30MBAR;5VDC/0,5-3,5V	31 26 044		
5	Cable tie; 100 X 2,5	31 20 175	2	
6	Hose; DN5 X 1,5	40 01 024		220 mm; "By-the-metre" goods
7	Air chamber set	60003525		incl. item 7.1 – 7.2
7.1	O-ring	30000196		
7.2	Cable tie; 100 X 2,5	31 20 175		
8	Thermal sensor kit 1000mm	80003803		with heat-conducting foil
9	Hexagonal nut; M5 SELBSTSICHERND	21 05 302		
10	Assembly plate; 129 X 293 X 491,22	61005381		not exchangeable with CN assembly plate
11	Twin terminal, blue	31 09 223		
12	Twin terminal, grey	31 09 222	4	
13	Double terminal, UK, 10-Twin-PE	31 09 224		
14	Earth conductor terminal green/yellow	31 09 120	2	
15	UDK 4 BU double terminal	31 09 152		
16	UDK 4 double terminal	31 09 151		
17	Universal fuse clip	31 09 063	2	incl. item 17.1
17.1	Securing plug	31 09 072	2	
18	Fine fuse, medium time lag; 250V; 4,0A; 5 X 20	31 11 123	2	retrofitable
19	Contact A16:3S: 1 N/C contact; 230V/50-60HZ; 7,5KW	31 04 162	2	
19	Contact A16:3S: 1 N/C contact; 200V/50-60HZ; 7,5KW	31 04 163	2	Japan
20	Radio interference suppression capacitor; 0,27MF + 2 X 27000PF	31 13 078		
21	Hexagonal nut; M5 SELBSTSICHERND	21 05 302		
22	Washer; D5,3 X D15 X 1,2	22 05 301		

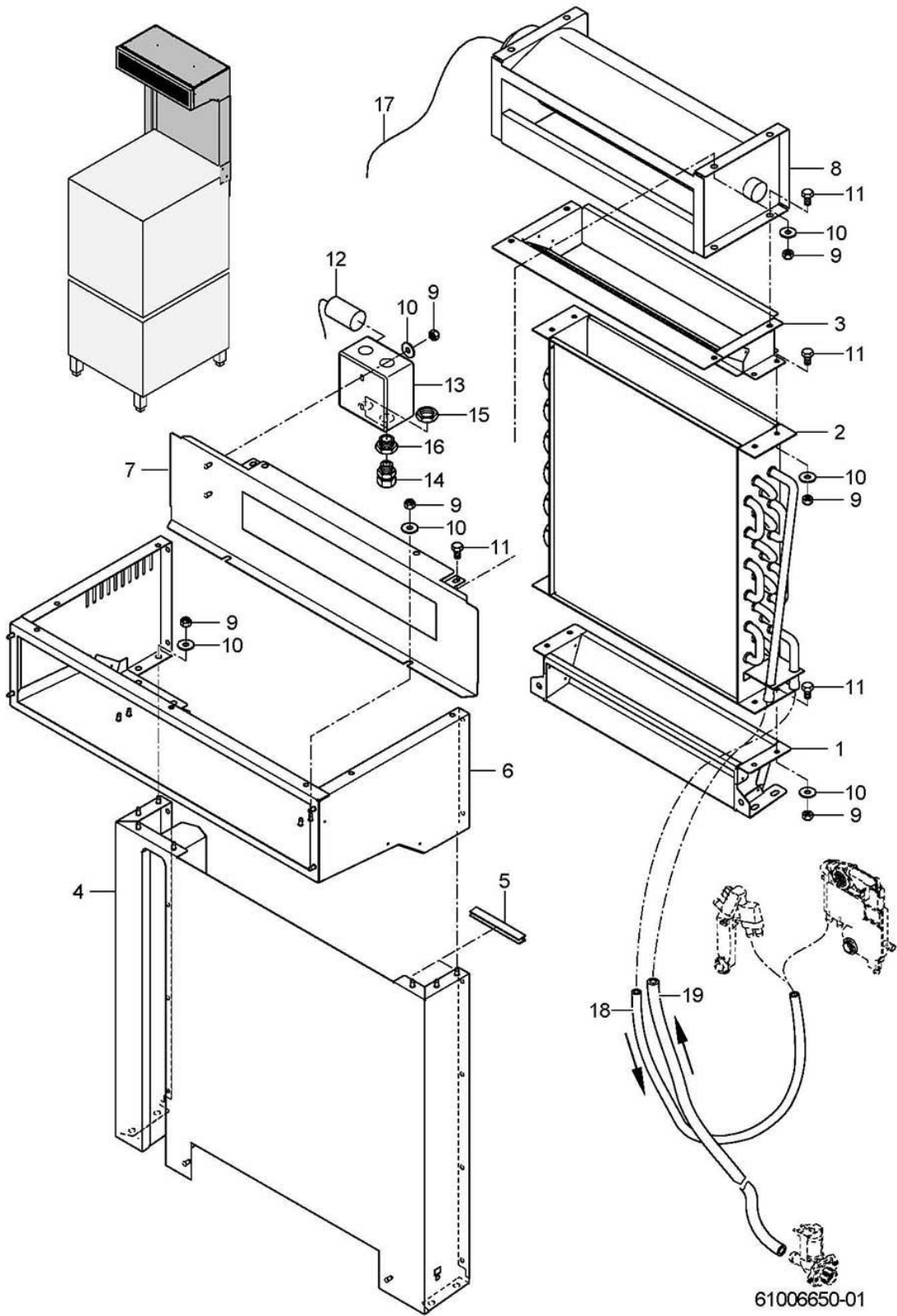
For missing items, see next page



61005380-02

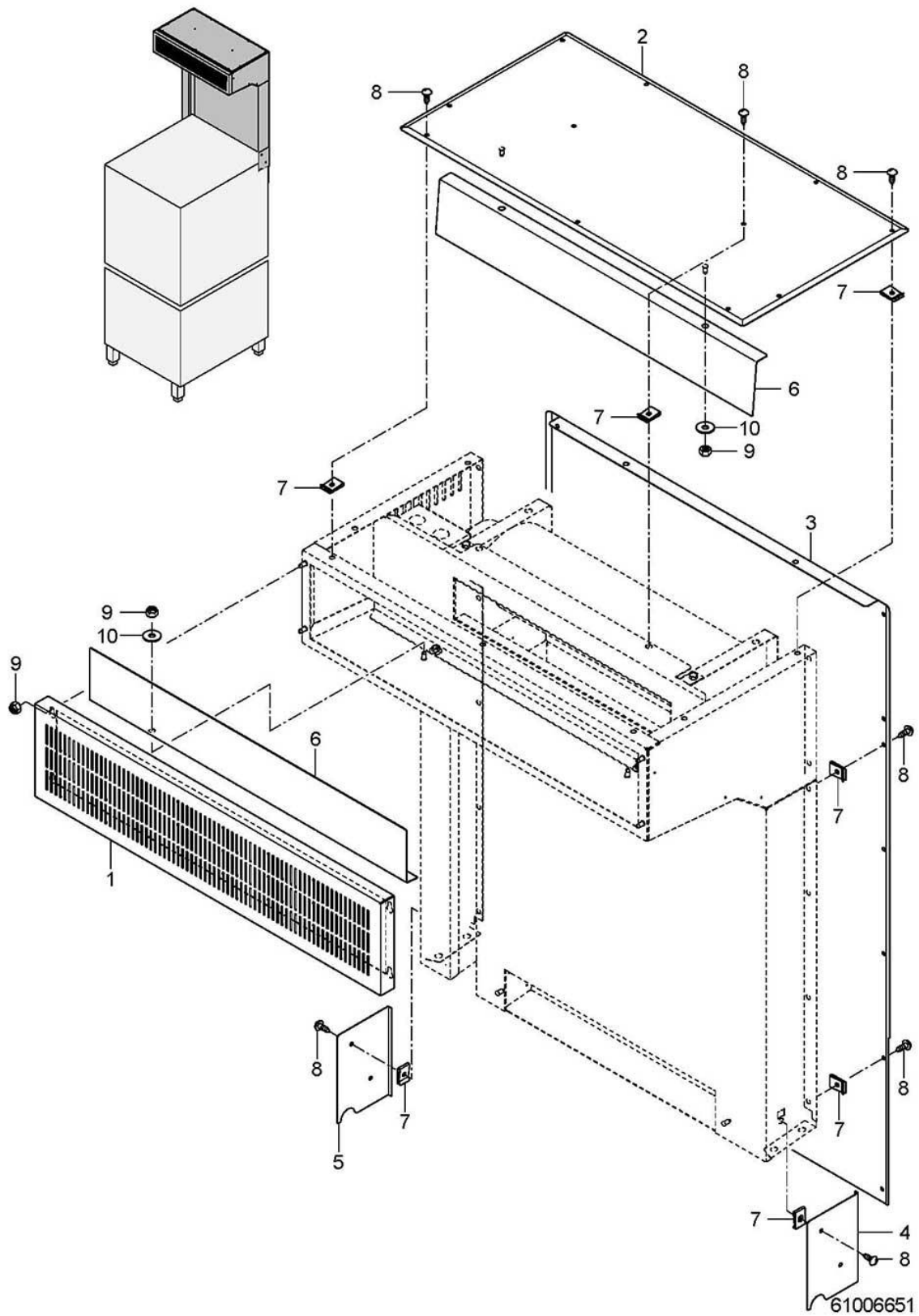
GS 502, GS 515**Electric parts - GS 502, GS 515**

Item.	Designation	Parts no.:	Pc.	Notes
23	Programme control WPS MAX Kit; 180-265V; 50/60HZ	31 05 139		
o.P.	WPS installation set (MAX-version)	55 28 270		Installation kit for reversible rinse temperature
24	Spacer; 18,70MM LANG	31 13 115	6	
25	Bracket; 5,0 X 20 X 72	61005446		
26	Magnetic switch; 32 X 14,9 X 6,9;1000LG	31 24 224		
27	RC element; 250V	31 13 166		
28	Support for operating panel	60003350		
29	Level sensor, electronic; 12V; 7MA; 80 X 20 MM	31 13 164		From machine no.: 479 003
30	Cable for level sensor; 2 X 0,34QMM	60003175		
31	Bus cable set	55 28 273		
32	Wiring loom; Water softener	61005966		
33	Pressure transmitter cable; 3 X 0,34QMM; 310 LG	61005025		
34	Macro-module plug; RAST5; 2-POLIG; UNCOD.	31 12 091		
34	Macro-module plug; RAST5; 3-POLIG UNCOD.	31 12 093		
34	Macro-module plug; RAST5; 4-POLIG UNCOD.	31 12 094		
34	Macro-module plug; RAST2,5; 3-POLIG UNCOD.	31 12 095		
34	Macro-module plug; RAST2,5; 5-POLIG UNCOD.	31 12 096		
35	Buzzer; 230VAC; 75DB; 23X30,5MM	31 13 133		Additional equipment
35	Set of acoustical level indicators; WPS MAX. VORHANDEN	55 28 283		with max. WPS version
35	Set of acoustical level indicators; WPS MAX.NICHT VORHAND.	55 28 284		with min. WPS version
o.P.	Supply cable, 5-wire; 5 X 2,5QMM; 3000 LG	31 23 132		
o.P.	Control unit wire set; 0,75QMM	61005023		
o.P.	Unit wire set DS; 7 X 2,5QMM	61005014		
o.P.	Support; 3,0 X 32 X 130	61005004		



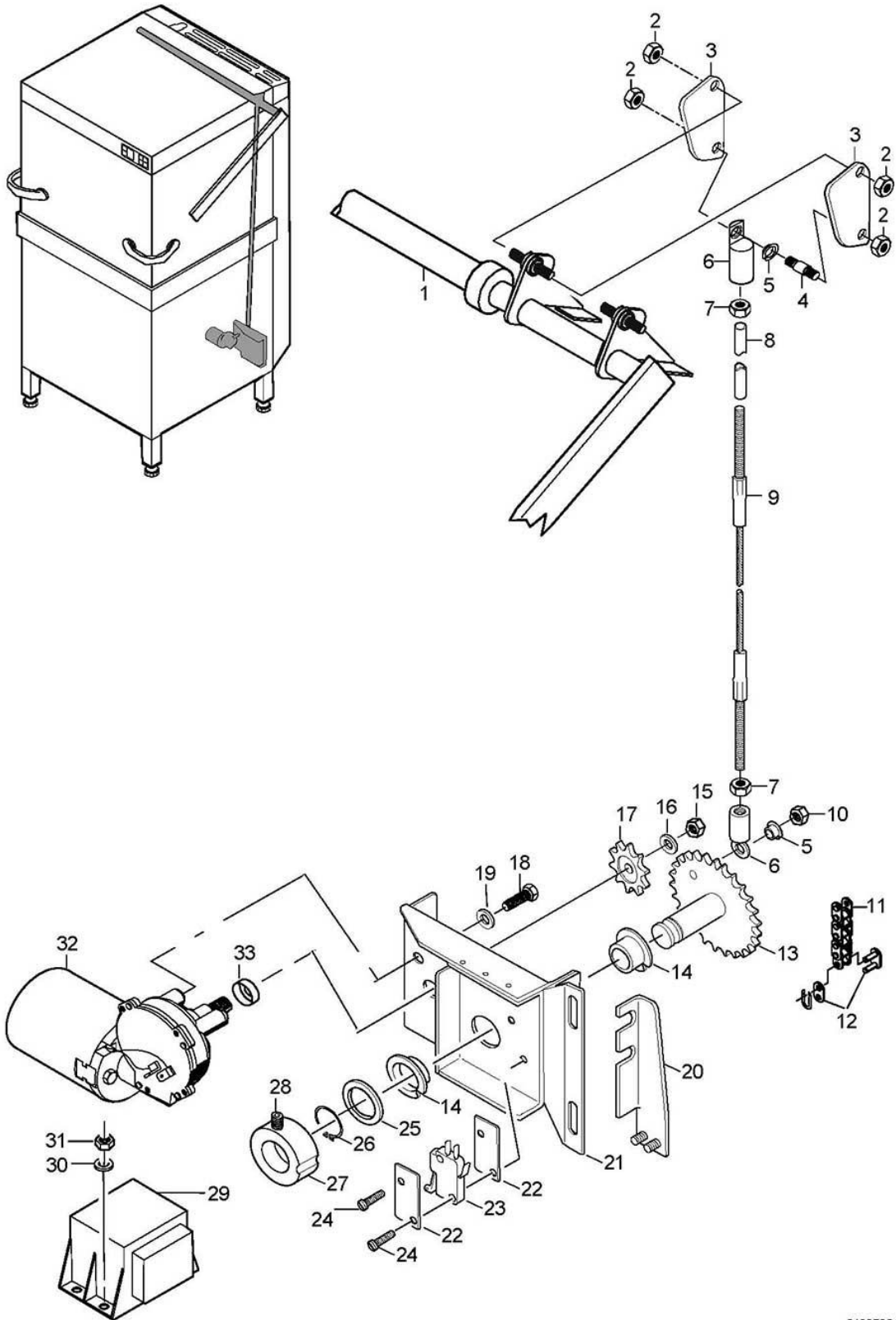
GS 502, GS 515**Vapour extraction - GS 502, GS 515 Energy / Energy+**

Item.	Designation	Parts no.:	Pc.	Notes
1	Flange	80003308		GS 502 Energy/Energy+
1	Flange	80003459		GS 515 Energy/Energy+
2	Heat exchanger	80003791		Copper
2	Heat exchanger	80003792		Stainless steel
3	Connecting sleeve	80003435		
4	Frame connector	80003473		GS 502 Energy/Energy+
4	Frame connector	80003444		GS 515 Energy/Energy+
5	Edge protection profile; U9,5 X 2,0	40 04 015		100 mm; "By-the-metre" goods
6	Hood cpl.	80003418		GS 502 Energy/Energy+
6	Hood cpl.	80003449		GS 515 Energy/Energy+
7	Panel	80003476		GS 502 Energy/Energy+
7	Panel	80003489		GS 515 Energy/Energy+
8	Cross flow fan; 200-240V/50-60HZ; IP44	31 17 033		
9	Hexagonal nut; M5 SELBSTSICHERND	21 05 302		
10	Washer; D5,3 X D15 X 1,2	22 05 301		
11	Hexagon screw; M5 X 10; A70	20 01 300		
12	Capacitor; 1,5 MICRO F / 400V	31 13 032		
13	10-pos. terminal block box; 57 X 94 X 94;IP54;4QMM	31 18 087		
14	Cable gland; M16 X 1,5;5-10MM;IP68	31 10 151		
15	Hexagonal nut; M20 X 1,5 X 5,0; SW27	31 10 162		
16	Reducing ring; M20 X 1,5/M16 X 1,5	31 10 178		
17	Cable, fan; 3 G 0,75QMM; 3400 LG	61006441		
18	Industrial hose; DN13 X 3,5	40 02 035		1430 mm; "By-the-metre" goods
19	Industrial hose; DN13 X 3,5	40 02 035		2000 mm; "By-the-metre" goods



GS 502, GS 515**Vapour extraction (covering) - GS 502, GS 515 Energy / Energy+**

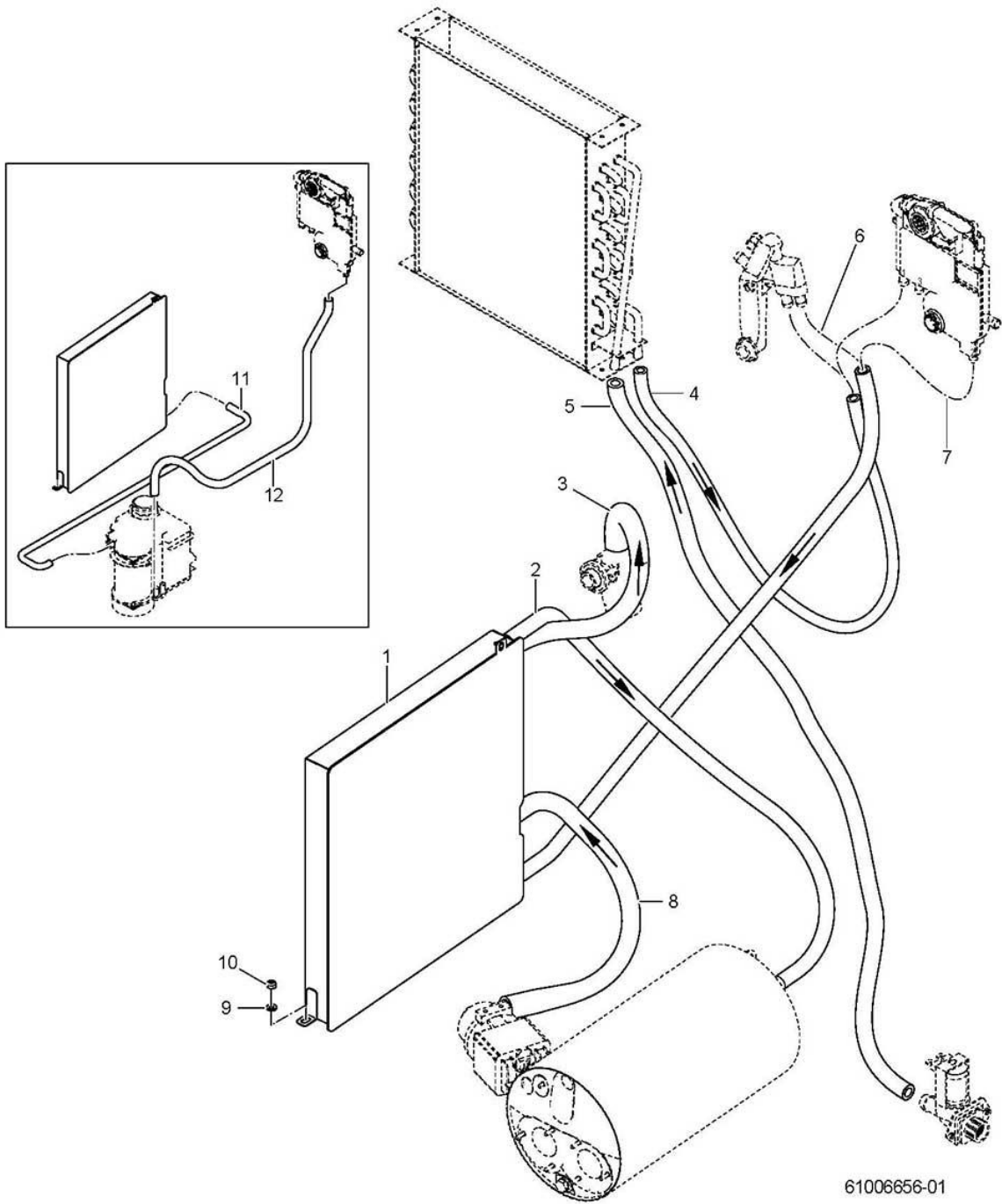
Item.	Designation	Parts no.:	Pc.	Notes
1	Screen; 1,0 X 214,5 X 684,5	80003567		GS 502 Energy/Energy+
1	Screen; 1,0 X 214,5 X 780,5	80003570		GS 515 Energy/Energy+
2	Top panelling	80003424		GS 502 Energy/Energy+
2	Housing	80003451		GS 515 Energy/Energy+
3	Rear wall covering; 0,8 X 607,72 X 939,05	80003362		GS 502 Energy/Energy+
3	Rear wall panelling; 0,8 X 704,1 X 935,95	80003462		GS 515 Energy/Energy+
4	Cover sheet right; 0,8 X 95,05 X 135	80003552		
5	Cover sheet left; 0,8 X 95,05 X 135	80003554		
6	Elbow; 1,0 X 98,96 X 560	80003385	2	GS 502 Energy/Energy+
6	Elbow; 1,0 X 108,12 X 650	80003469	2	GS 515 Energy/Energy+
7	Sheet metal nut; B 3,9	21 17 301	11	
8	Sheet metal screw; ST 3,9 X 13	20 20 310	11	
9	Hexagonal nut; M5 SELBSTSICHERND	21 05 302		
10	Washer; D5,3 X D15 X 1,2	22 05 301		



61005861-00

GS 502, GS 515**Automatic hood opening (option) - GS 515**

Item.	Designation	Parts no.:	Pc.	Notes
1	Hood lever cpl.	61005702		
2	Hexagonal nut; M6 SELBSTSICHERND	21 05 304		
3	Lug; 2,0 X 45,17 X 81,77	61005760		
4	Shaft; D10 X 34	61005054		
5	Sliding bearing with collar; D10 X D12 X D18 X 7,0	28 09 015		
6	Lug; D20 X 50	61005662		
7	Hexagonal nut; M6	21 02 304		
8	Industrial hose; DN13 X 3,5	40 02 035		1060 mm; "By-the-metre" goods
9	Wire rope; D4 X 997; M6	61005820		
10	Hexagonal nut; M6 SELBSTSICHERND	21 05 304		
11	Roller chain; 3/8" X 7/32"	28 10 038		345 mm; "By-the-metre" goods
12	Master link; 06 B-1	28 10 037		
13	Chain wheel cpl.	61005744		
14	Sliding bearing with collar; D20 X D23 X D30 X 11,5	28 09 016		
15	Hexagonal nut; M8 SELBSTSICHERND	21 05 306		
16	Washer; D8,4 X D17 X 1,6	22 01 303		
17	Chain wheel, 10 teeth; 3/8" X 7/32" X 13,5	61005599		
18	Hexagon screw; M6 X 16; A70	20 01 306	3	
19	Spring washer; B6	23 03 300	3	
20	Support angle	61005750		
21	Bearing bracket cpl.	61005752		
22	Insulating plate; 0,8 X 25,5 X 43	31 24 235	2	
23	Snap switch; 6A; 400V AC; 1WECHSLER	31 24 234		
24	Cylinder head screw; M3 X 18	20 09 311	2	
25	Washer; D20,5 X D30 X 1,5	61005753		
26	Locking ring; D20 X 1,2	23 10 001		
27	Collar; D44 X 20	61005747		
28	Grub screw; M6 X 16	20 30 302		
29	Transformer; 230V/1/50HZ	31 15 020		
30	Washer; D5,3 X D12 X 0,8	22 02 313		
31	Hexagonal nut; M5 SELBSTSICHERND	21 05 302		
32	Geared motor set	61006607		
33	Radial shaft seal; D9,7 X D18 X 6	27 10 022		



GS 502, GS 515

Waste water heat recovery - GS 502, GS 515 Energy+

Item.	Designation	Parts no.:	Pc.	Notes
1	Heat exchanger	80003665		
2	Moulded hose; DN12,5 X 4,0	80003727		
3	Moulded hose; DN17 X DN24 X 4,0	80003721		
4	Industrial hose; DN13 X 3,5	40 02 035		1300 mm; "By-the-metre" goods
5	Industrial hose; DN13 X 3,5	40 02 035		2000 mm; "By-the-metre" goods
6	Hose elbow; DN12,5 X 4,0	40 03 051		adapt
7	Moulded hose; DN10 X DN12,5 X 3,5	80003726		
8	Moulded hose; DN17 X D24 X 4,0	80003720		
9	Washer; D5,3 X D15 X 1,2	22 05 301		
10	Hexagonal nut; M5 SELBSTSICHERND	21 05 302		
11	Moulded hose; DN10 X DN12,5 X 3,5	80003725		
12	Hose; DN10 X 2,0	40 01 050		1010 mm; "By-the-metre" goods